

Datasheet for ABIN632652
anti-FAM160B1 antibody (N-Term)



[Go to Product page](#)

1 Image

Overview

Quantity:	100 µL
Target:	FAM160B1
Binding Specificity:	N-Term
Reactivity:	Human
Host:	Rabbit
Clonality:	Polyclonal
Conjugate:	This FAM160B1 antibody is un-conjugated
Application:	Western Blotting (WB)

Product Details

Immunogen:	FAM160 B1 antibody was raised using the N terminal of FAM160 1 corresponding to a region with amino acids HYYIETSDDKAPVTDTNIPSHLEQMLDILVQEENERESGETGPCMEYLLH
Specificity:	FAM160 B1 antibody was raised against the N terminal of FAM160 1
Purification:	Affinity purified

Target Details

Target:	FAM160B1
Alternative Name:	FAM160B1 (FAM160B1 Products)
Background:	The function of FAM160 protein is not widely studied, and is yet to be elucidated fully.
Molecular Weight:	86 kDa (MW of target protein)

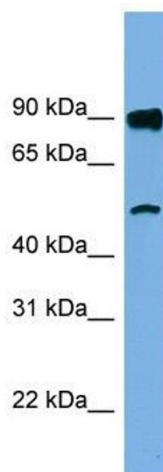
Application Details

Application Notes:	WB: 1 µg/mL Optimal conditions should be determined by the investigator.
Comment:	FAM160B1 Blocking Peptide, catalog no. 33R-3884, is also available for use as a blocking control in assays to test for specificity of this FAM160B1 antibody
Restrictions:	For Research Use only

Handling

Format:	Lyophilized
Reconstitution:	Lyophilized powder. Add distilled water for a 1 mg/mL concentration of FAM160 1 antibody in PBS
Concentration:	Lot specific
Buffer:	PBS
Handling Advice:	Avoid repeated freeze/thaw cycles. Dilute only prior to immediate use.
Storage:	4 °C/-20 °C
Storage Comment:	Store at 2-8 °C for short periods. For longer periods of storage, store at -20 °C.

Images



Western Blotting

Image 1. FAM160B1 antibody used at 1 ug/ml to detect target protein.