

Datasheet for ABIN632655
anti-DDHD2 antibody (N-Term)



[Go to Product page](#)

1 Image

Overview

Quantity:	100 µL
Target:	DDHD2
Binding Specificity:	N-Term
Reactivity:	Human
Host:	Rabbit
Clonality:	Polyclonal
Conjugate:	This DDHD2 antibody is un-conjugated
Application:	Western Blotting (WB)

Product Details

Immunogen:	DDHD2 antibody was raised using the N terminal of DDHD2 corresponding to a region with amino acids DGWGSTPTEQGRPRTVKRGVENISVDIHCGEPLQIDHLVFFVHGIGPACD
Specificity:	DDHD2 antibody was raised against the N terminal of DDHD2
Purification:	Affinity purified

Target Details

Target:	DDHD2
Alternative Name:	DDHD2 (DDHD2 Products)
Background:	DDHD2 is a phospholipase that hydrolyzes preferentially phosphatidic acid and phosphatidylethanolamine. DDHD2 may be involved in the maintenance of the endoplasmic reticulum and/or Golgi structures.

Target Details

Molecular Weight: 81 kDa (MW of target protein)

Application Details

Application Notes: WB: 1 µg/mL
Optimal conditions should be determined by the investigator.

Comment: DDHD2 Blocking Peptide, catalog no. 33R-1971, is also available for use as a blocking control in assays to test for specificity of this DDHD2 antibody

Restrictions: For Research Use only

Handling

Format: Lyophilized

Reconstitution: Lyophilized powder. Add distilled water for a 1 mg/mL concentration of DDHD2 antibody in PBS

Concentration: Lot specific

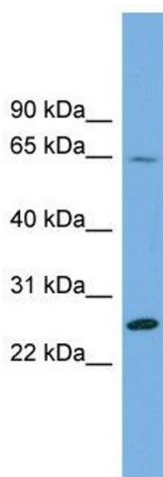
Buffer: PBS

Handling Advice: Avoid repeated freeze/thaw cycles.
Dilute only prior to immediate use.

Storage: 4 °C/-20 °C

Storage Comment: Store at 2-8 °C for short periods. For longer periods of storage, store at -20 °C.

Images



Western Blotting

Image 1. DDHD2 antibody used at 1 ug/ml to detect target protein.