

Datasheet for ABIN632659
anti-CHMP1B antibody (N-Term)



[Go to Product page](#)

1 Image

Overview

Quantity:	100 µL
Target:	CHMP1B
Binding Specificity:	N-Term
Reactivity:	Human
Host:	Rabbit
Clonality:	Polyclonal
Conjugate:	This CHMP1B antibody is un-conjugated
Application:	Western Blotting (WB)

Product Details

Immunogen:	CHMP1 B antibody was raised using the N terminal of CHMP1 corresponding to a region with amino acids KIKKAIQKGNMEVARIHAENAIRQKNQAVNFLRMSARVDAVAARVQTAVT
Specificity:	CHMP1 B antibody was raised against the N terminal of CHMP1
Purification:	Affinity purified

Target Details

Target:	CHMP1B
Alternative Name:	CHMP1B (CHMP1B Products)
Background:	CHMP1B belongs to the chromatin-modifying protein/charged multivesicular body protein (CHMP) family. These proteins are components of ESCRT-III (endosomal sorting complex required for transport III), a complex involved in degradation of surface receptor proteins and

Target Details

formation of endocytic multivesicular bodies (MVBs). Some CHMPs have both nuclear and cytoplasmic/vesicular distributions, and one such CHMP, CHMP1A, is required for both MVB formation and regulation of cell cycle progression.

Molecular Weight: 22 kDa (MW of target protein)

Application Details

Application Notes: WB: 1 µg/mL
Optimal conditions should be determined by the investigator.

Comment: CHMP1B Blocking Peptide, catalog no. 33R-4435, is also available for use as a blocking control in assays to test for specificity of this CHMP1B antibody

Restrictions: For Research Use only

Handling

Format: Lyophilized

Reconstitution: Lyophilized powder. Add distilled water for a 1 mg/mL concentration of CHMP0 antibody in PBS

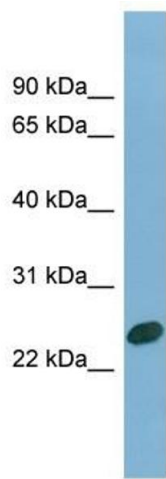
Concentration: Lot specific

Buffer: PBS

Handling Advice: Avoid repeated freeze/thaw cycles.
Dilute only prior to immediate use.

Storage: 4 °C/-20 °C

Storage Comment: Store at 2-8 °C for short periods. For longer periods of storage, store at -20 °C.



Western Blotting

Image 1. CHMP1B antibody used at 1 ug/ml to detect target protein.