

Datasheet for ABIN632690  
**anti-LIPJ antibody (C-Term)**



[Go to Product page](#)

1 Image

## Overview

Quantity:	100 µL
Target:	LIPJ
Binding Specificity:	C-Term
Reactivity:	Human
Host:	Rabbit
Clonality:	Polyclonal
Conjugate:	This LIPJ antibody is un-conjugated
Application:	Western Blotting (WB)

## Product Details

Immunogen:	Lipase J antibody was raised using the C terminal of LIPJ corresponding to a region with amino acids LNLVHYNQTTSPLYNMTNMNVATAIWNGKSDLLADPEDVNILHSEITNHI
Specificity:	Lipase J antibody was raised against the C terminal of LIPJ
Purification:	Affinity purified

## Target Details

Target:	LIPJ
Alternative Name:	Lipase J ( <a href="#">LIPJ Products</a> )
Background:	LIPJ belongs to the AB hydrolase superfamily, lipase family. The exact function of LIPJ remains unknown.

## Target Details

---

Molecular Weight: 42 kDa (MW of target protein)

## Application Details

---

Application Notes: WB: 0.5 µg/mL  
Optimal conditions should be determined by the investigator.

Comment: Lipase J Blocking Peptide, catalog no. 33R-5229, is also available for use as a blocking control in assays to test for specificity of this Lipase J antibody

Restrictions: For Research Use only

## Handling

---

Format: Lyophilized

Reconstitution: Lyophilized powder. Add distilled water for a 1 mg/mL concentration of LIPJ antibody in PBS

Concentration: Lot specific

Buffer: PBS

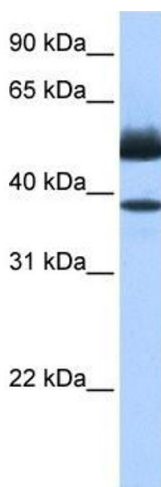
Handling Advice: Avoid repeated freeze/thaw cycles.  
Dilute only prior to immediate use.

Storage: 4 °C/-20 °C

Storage Comment: Store at 2-8 °C for short periods. For longer periods of storage, store at -20 °C.

## Images

---



### Western Blotting

**Image 1.** Lipase J antibody used at 0.5 ug/ml to detect target protein.