

Datasheet for ABIN632695 **anti-DPH1 antibody**



[Go to Product page](#)

1 Image

Overview

Quantity:	100 µL
Target:	DPH1
Reactivity:	Human, Mouse
Host:	Rabbit
Clonality:	Polyclonal
Conjugate:	This DPH1 antibody is un-conjugated
Application:	Western Blotting (WB)

Product Details

Immunogen:	DPH1 antibody was raised using a synthetic peptide corresponding to a region with amino acids RMQAARQEAIATARSAKSWGILGLTLGRQGSPKILEHLESRLRALGLSFV
Purification:	Affinity purified

Target Details

Target:	DPH1
Alternative Name:	DPH1 (DPH1 Products)
Background:	Diphthamide is a unique posttranslationally modified histidine found only in translation elongation factor-2 . This modification is conserved from archaeobacteria to humans and serves as the target for ADP-ribosylation and inactivation of EEF2 by diphtheria toxin (DT) and Pseudomonas exotoxin A. DPH1 is 1 of several enzymes involved in synthesis of diphthamide in EEF2.

Target Details

Molecular Weight: 49 kDa (MW of target protein)

Application Details

Application Notes: WB: 0.5 µg/mL
Optimal conditions should be determined by the investigator.

Comment: DPH1 Blocking Peptide, catalog no. 33R-8068, is also available for use as a blocking control in assays to test for specificity of this DPH1 antibody

Restrictions: For Research Use only

Handling

Format: Lyophilized

Reconstitution: Lyophilized powder. Add distilled water for a 1 mg/mL concentration of DPH1 antibody in PBS

Concentration: Lot specific

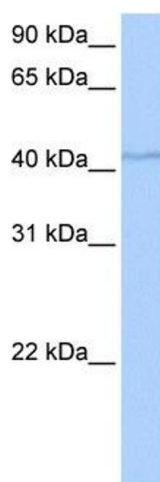
Buffer: PBS

Handling Advice: Avoid repeated freeze/thaw cycles.

Storage: 4 °C/-20 °C

Storage Comment: Store at 2-8 °C for short periods. For longer periods of storage, store at -20 °C.

Images



Western Blotting

Image 1. DPH1 antibody used at 0.5 ug/ml to detect target protein.