

Datasheet for ABIN632707

anti-C20orf141 antibody (Middle Region)[Go to Product page](#)**1** Image

Overview

Quantity:	100 µL
Target:	C20orf141
Binding Specificity:	Middle Region
Reactivity:	Human, Mouse
Host:	Rabbit
Clonality:	Polyclonal
Conjugate:	This C20orf141 antibody is un-conjugated
Application:	Western Blotting (WB)

Product Details

Immunogen:	C20 ORF141 antibody was raised using the middle region of C20 rf141 corresponding to a region with amino acids HTLPQRKLLTRGQSQGAGEGPGQEALLLQMGTVSGQLSLQDALLLLMG
Specificity:	C20 ORF141 antibody was raised against the middle region of C20 rf141
Purification:	Affinity purified

Target Details

Target:	C20orf141
Alternative Name:	C20ORF141 (C20orf141 Products)
Background:	The function of C20orf141 protein has not been widely studied, and is yet to be fully elucidated.

Target Details

Molecular Weight: 17 kDa (MW of target protein)

Application Details

Application Notes: WB: 1 µg/mL
Optimal conditions should be determined by the investigator.

Comment: C200RF141 Blocking Peptide, catalog no. 33R-3864, is also available for use as a blocking control in assays to test for specificity of this C200RF141 antibody

Restrictions: For Research Use only

Handling

Format: Lyophilized

Reconstitution: Lyophilized powder. Add distilled water for a 1 mg/mL concentration of C20 RF141 antibody in PBS

Concentration: Lot specific

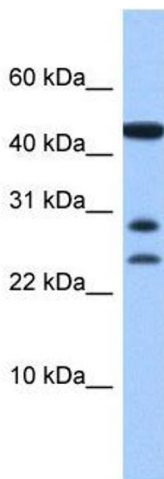
Buffer: PBS

Handling Advice: Avoid repeated freeze/thaw cycles.
Dilute only prior to immediate use.

Storage: 4 °C/-20 °C

Storage Comment: Store at 2-8 °C for short periods. For longer periods of storage, store at -20 °C.

Images



Western Blotting

Image 1. C200RF141 antibody used at 1 ug/ml to detect target protein.