

Datasheet for ABIN632731
anti-C16ORF46 antibody (N-Term)



[Go to Product page](#)

1 Image

Overview

Quantity:	100 µL
Target:	C16ORF46
Binding Specificity:	N-Term
Reactivity:	Human
Host:	Rabbit
Clonality:	Polyclonal
Conjugate:	This C16ORF46 antibody is un-conjugated
Application:	Western Blotting (WB)

Product Details

Immunogen:	C16 ORF46 antibody was raised using the N terminal Of C16 rf46 corresponding to a region with amino acids LSHWSLQTKPPTTEGGPEKDQSSPSQTQAAPQGPSTASRAISDICFPTYFR
Specificity:	C16 ORF46 antibody was raised against the N terminal Of C16 rf46
Purification:	Affinity purified

Target Details

Target:	C16ORF46
Alternative Name:	C16ORF46 (C16ORF46 Products)
Background:	The function of C16orf46 protein has not been widely studied, and is yet to be fully elucidated.
Molecular Weight:	43 kDa (MW of target protein)

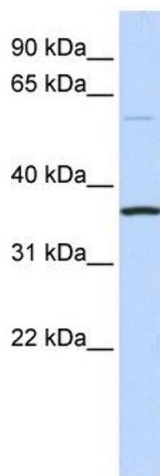
Application Details

Application Notes:	WB: 1 µg/mL Optimal conditions should be determined by the investigator.
Comment:	C16ORF46 Blocking Peptide, catalog no. 33R-5431, is also available for use as a blocking control in assays to test for specificity of this C16ORF46 antibody
Restrictions:	For Research Use only

Handling

Format:	Lyophilized
Reconstitution:	Lyophilized powder. Add distilled water for a 1 mg/mL concentration of C10 RF46 antibody in PBS
Concentration:	Lot specific
Buffer:	PBS
Handling Advice:	Avoid repeated freeze/thaw cycles. Dilute only prior to immediate use.
Storage:	4 °C/-20 °C
Storage Comment:	Store at 2-8 °C for short periods. For longer periods of storage, store at -20 °C.

Images



Western Blotting

Image 1. C16ORF46 antibody used at 1 ug/ml to detect target protein.