

Datasheet for ABIN632733
anti-KRT222 antibody (N-Term)



[Go to Product page](#)

1 Image

Overview

Quantity:	100 µL
Target:	KRT222
Binding Specificity:	N-Term
Reactivity:	Mouse, Human, Rat
Host:	Rabbit
Clonality:	Polyclonal
Conjugate:	This KRT222 antibody is un-conjugated
Application:	Western Blotting (WB)

Product Details

Immunogen:	Cytokeratin 222 Pseudogene antibody was raised using the N terminal of KRT222 P corresponding to a region with amino acids ELSQLLNEIRANYEKILTRNQIETVLSTRIQLEEDISKKMDKDEEALKAA
Specificity:	Cytokeratin 222 Pseudogene antibody was raised against the N terminal of KRT222 P
Purification:	Affinity purified

Target Details

Target:	KRT222
Abstract:	KRT222 Products
Background:	KRT222P belongs to the intermediate filament family. The exact function of KRT222P is not known.

Target Details

Molecular Weight: 34 kDa (MW of target protein)

Application Details

Application Notes: WB: 1 µg/mL
Optimal conditions should be determined by the investigator.

Comment: Cytokeratin 222 Pseudogene Blocking Peptide, catalog no. 33R-2575, is also available for use as a blocking control in assays to test for specificity of this Cytokeratin 222 Pseudogene antibody

Restrictions: For Research Use only

Handling

Format: Lyophilized

Reconstitution: Lyophilized powder. Add distilled water for a 1 mg/mL concentration of KRT220 antibody in PBS

Concentration: Lot specific

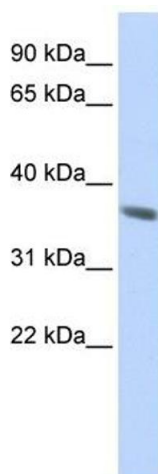
Buffer: PBS

Handling Advice: Avoid repeated freeze/thaw cycles.
Dilute only prior to immediate use.

Storage: 4 °C/-20 °C

Storage Comment: Store at 2-8 °C for short periods. For longer periods of storage, store at -20 °C.

Images



Western Blotting

Image 1. Cytokeratin 222 Pseudogene antibody used at 1 µg/ml to detect target protein.