

Datasheet for ABIN632740  
**anti-C4ORF23 antibody (N-Term)**



[Go to Product page](#)

1 Image

## Overview

Quantity:	100 µL
Target:	C4ORF23 (METTL19)
Binding Specificity:	N-Term
Reactivity:	Human, Rat
Host:	Rabbit
Clonality:	Polyclonal
Conjugate:	This C4ORF23 antibody is un-conjugated
Application:	Western Blotting (WB)

## Product Details

Immunogen:	C4 ORF23 antibody was raised using the N terminal Of C4 rf23 corresponding to a region with amino acids LTPWIPVIAARSSYNCRFFVLPCFFDFIGRYSRRQSKKTQYREYLDFIK
Specificity:	C4 ORF23 antibody was raised against the N terminal Of C4 rf23
Purification:	Affinity purified

## Target Details

Target:	C4ORF23 (METTL19)
Alternative Name:	C4ORF23 ( <a href="#">METTL19 Products</a> )
Background:	The function of Chromosome 4 ORF protein is not widely studied, and is yet to be elucidated fully.

## Target Details

---

Molecular Weight: 41 kDa (MW of target protein)

## Application Details

---

Application Notes: WB: 1 µg/mL  
Optimal conditions should be determined by the investigator.

Comment: C4ORF23 Blocking Peptide, catalog no. 33R-5486, is also available for use as a blocking control in assays to test for specificity of this C4ORF23 antibody

Restrictions: For Research Use only

## Handling

---

Format: Lyophilized

Reconstitution: Lyophilized powder. Add distilled water for a 1 mg/mL concentration of C0 RF23 antibody in PBS

Concentration: Lot specific

Buffer: PBS

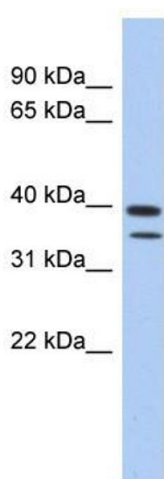
Handling Advice: Avoid repeated freeze/thaw cycles.  
Dilute only prior to immediate use.

Storage: 4 °C/-20 °C

Storage Comment: Store at 2-8 °C for short periods. For longer periods of storage, store at -20 °C.

## Images

---



### Western Blotting

**Image 1.** C4ORF23 antibody used at 1 ug/ml to detect target protein.