

Datasheet for ABIN632742
anti-C12ORF50 antibody (N-Term)



[Go to Product page](#)

1 Image

Overview

Quantity:	100 µL
Target:	C12ORF50
Binding Specificity:	N-Term
Reactivity:	Human
Host:	Rabbit
Clonality:	Polyclonal
Conjugate:	This C12ORF50 antibody is un-conjugated
Application:	Western Blotting (WB)

Product Details

Immunogen:	C12 ORF50 antibody was raised using the N terminal Of C12 rf50 corresponding to a region with amino acids INGLFLPPSSNITLQKEIQEGIPLQSQSQEPLKPQENISRPIHHPLVLKT
Specificity:	C12 ORF50 antibody was raised against the N terminal Of C12 rf50
Purification:	Affinity purified

Target Details

Target:	C12ORF50
Alternative Name:	C12ORF50 (C12ORF50 Products)
Background:	The function of Chromosome 12 ORF protein is not widely studied, and is yet to be elucidated fully.

Target Details

Molecular Weight: 47 kDa (MW of target protein)

Application Details

Application Notes: WB: 1 µg/mL
Optimal conditions should be determined by the investigator.

Comment: C12ORF50 Blocking Peptide, catalog no. 33R-4072, is also available for use as a blocking control in assays to test for specificity of this C12ORF50 antibody

Restrictions: For Research Use only

Handling

Format: Lyophilized

Reconstitution: Lyophilized powder. Add distilled water for a 1 mg/mL concentration of C10 RF50 antibody in PBS

Concentration: Lot specific

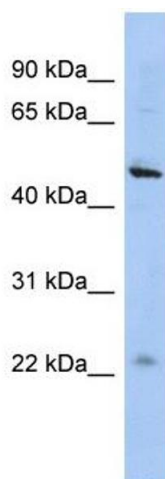
Buffer: PBS

Handling Advice: Avoid repeated freeze/thaw cycles.
Dilute only prior to immediate use.

Storage: 4 °C/-20 °C

Storage Comment: Store at 2-8 °C for short periods. For longer periods of storage, store at -20 °C.

Images



Western Blotting

Image 1. C12ORF50 antibody used at 1 ug/ml to detect target protein.