

Datasheet for ABIN632774
anti-THAP5 antibody (Middle Region)



[Go to Product page](#)

1 Image

Overview

Quantity:	100 µL
Target:	THAP5
Binding Specificity:	Middle Region
Reactivity:	Human
Host:	Rabbit
Clonality:	Polyclonal
Conjugate:	This THAP5 antibody is un-conjugated
Application:	Western Blotting (WB)

Product Details

Immunogen:	THAP5 antibody was raised using the middle region of THAP5 corresponding to a region with amino acids TTITLTTSNSESIIHQSLTQEVLEVTTSHLANPNFTSNSMEIKSAQENPF
Specificity:	THAP5 antibody was raised against the middle region of THAP5
Purification:	Affinity purified

Target Details

Target:	THAP5
Alternative Name:	THAP5 (THAP5 Products)
Background:	THAP5 contains 1 THAP-type zinc finger. The exact function of THAP5 remains unknown.
Molecular Weight:	44 kDa (MW of target protein)

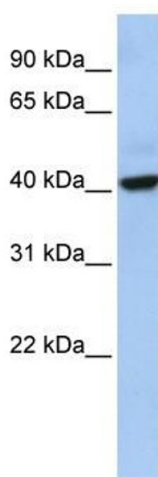
Application Details

Application Notes:	WB: 1 µg/mL Optimal conditions should be determined by the investigator.
Comment:	THAP5 Blocking Peptide, catalog no. 33R-9320, is also available for use as a blocking control in assays to test for specificity of this THAP5 antibody
Restrictions:	For Research Use only

Handling

Format:	Lyophilized
Reconstitution:	Lyophilized powder. Add distilled water for a 1 mg/mL concentration of THAP5 antibody in PBS
Concentration:	Lot specific
Buffer:	PBS
Handling Advice:	Avoid repeated freeze/thaw cycles. Dilute only prior to immediate use.
Storage:	4 °C/-20 °C
Storage Comment:	Store at 2-8 °C for short periods. For longer periods of storage, store at -20 °C.

Images



Western Blotting

Image 1. THAP5 antibody used at 1 ug/ml to detect target protein.