

Datasheet for ABIN632778

anti-FAM116A antibody (Middle Region)[Go to Product page](#)**1** Image

Overview

Quantity:	100 µL
Target:	FAM116A
Binding Specificity:	Middle Region
Reactivity:	Human, Rat
Host:	Rabbit
Clonality:	Polyclonal
Conjugate:	This FAM116A antibody is un-conjugated
Application:	Western Blotting (WB)

Product Details

Immunogen:	FAM116 A antibody was raised using the middle region of FAM116 corresponding to a region with amino acids KPGVYTSYKPYLNRDEEIIKQLQKGVQKRPSEAQSVILRRYFLELTQSF
Specificity:	FAM116 A antibody was raised against the middle region of FAM116
Purification:	Affinity purified

Target Details

Target:	FAM116A
Alternative Name:	FAM116A (FAM116A Products)
Background:	FAM116A belongs to the FAM116 family. The exact function of FAM116A remains unknown.
Molecular Weight:	67 kDa (MW of target protein)

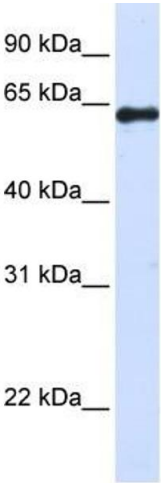
Application Details

Application Notes:	WB: 1 µg/mL Optimal conditions should be determined by the investigator.
Comment:	FAM116A Blocking Peptide, catalog no. 33R-4585, is also available for use as a blocking control in assays to test for specificity of this FAM116A antibody
Restrictions:	For Research Use only

Handling

Format:	Lyophilized
Reconstitution:	Lyophilized powder. Add distilled water for a 1 mg/mL concentration of FAM110 antibody in PBS
Concentration:	Lot specific
Buffer:	PBS
Handling Advice:	Avoid repeated freeze/thaw cycles. Dilute only prior to immediate use.
Storage:	4 °C/-20 °C
Storage Comment:	Store at 2-8 °C for short periods. For longer periods of storage, store at -20 °C.

Images



Western Blotting

Image 1. FAM116A antibody used at 1 ug/ml to detect target protein.