

Datasheet for ABIN632780
anti-MAGEA4 antibody (C-Term)



[Go to Product page](#)

1 Image

Overview

Quantity:	100 µL
Target:	MAGEA4
Binding Specificity:	C-Term
Reactivity:	Human
Host:	Rabbit
Clonality:	Polyclonal
Conjugate:	This MAGEA4 antibody is un-conjugated
Application:	Western Blotting (WB)

Product Details

Immunogen:	MAGEA4 antibody was raised using the C terminal of MAGEA4 corresponding to a region with amino acids ENYLEYRQVPGSNPARYEFLWGPRLAETS YVKVLEHVVRVNARVRIAYP
Specificity:	MAGEA4 antibody was raised against the C terminal of MAGEA4
Purification:	Affinity purified

Target Details

Target:	MAGEA4
Alternative Name:	MAGEA4 (MAGEA4 Products)
Background:	MAGEA4 is a member of the MAGEA family. The members of this family are proteins with 50 to 80% sequence identity to each other. The promoters and first exons of the MAGEA genes show considerable variability, suggesting that the existence of this gene family enables the same

Target Details

function to be expressed under different transcriptional controls. The MAGEA genes are clustered at chromosomal location Xq28. They have been implicated in some hereditary disorders, such as dyskeratosis congenita.

Molecular Weight: 35 kDa (MW of target protein)

Application Details

Application Notes: WB: 1 µg/mL
Optimal conditions should be determined by the investigator.

Comment: MAGEA4 Blocking Peptide, catalog no. 33R-2620, is also available for use as a blocking control in assays to test for specificity of this MAGEA4 antibody

Restrictions: For Research Use only

Handling

Format: Lyophilized

Reconstitution: Lyophilized powder. Add distilled water for a 1 mg/mL concentration of MAGEA4 antibody in PBS

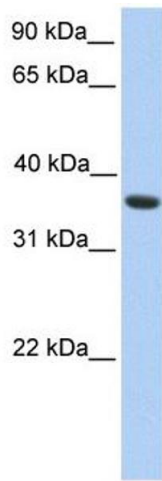
Concentration: Lot specific

Buffer: PBS

Handling Advice: Avoid repeated freeze/thaw cycles.
Dilute only prior to immediate use.

Storage: 4 °C/-20 °C

Storage Comment: Store at 2-8 °C for short periods. For longer periods of storage, store at -20 °C.



Western Blotting

Image 1. MAGEA4 antibody used at 1 ug/ml to detect target protein.