

## Datasheet for ABIN632800 **anti-PTGR1 antibody (N-Term)**



[Go to Product page](#)

### 1 Image

#### Overview

Quantity:	100 µL
Target:	PTGR1
Binding Specificity:	N-Term
Reactivity:	Human
Host:	Rabbit
Clonality:	Polyclonal
Conjugate:	This PTGR1 antibody is un-conjugated
Application:	Western Blotting (WB)

#### Product Details

Immunogen:	LTB4 DH antibody was raised using the N terminal Of Ltb4 h corresponding to a region with amino acids VRTKTWTLKHKHFVGYPTNSDFELKTSELPLKNGEVLLLEALFLTVDPYMR
Specificity:	LTB4 DH antibody was raised against the N terminal Of Ltb4 h
Purification:	Affinity purified

#### Target Details

Target:	PTGR1
Alternative Name:	LTB4DH ( <a href="#">PTGR1 Products</a> )
Background:	LTB4DH functions as 15-oxo-prostaglandin 13-reductase and acts on 15-oxo-PGE1, 15-oxo-PGE2 and 15-oxo-PGE2-alpha. It has no activity towards PGE1, PGE2 and PGE2-alpha. LTB4DH catalyzes the conversion of leukotriene B4 into its biologically less active metabolite, 12-oxo-

## Target Details

leukotriene B4. This is an initial and key step of metabolic inactivation of leukotriene B4.

Molecular Weight: 36 kDa (MW of target protein)

## Application Details

Application Notes: WB: 1 µg/mL

Optimal conditions should be determined by the investigator.

Comment: LTB4DH Blocking Peptide, catalog no. 33R-9791, is also available for use as a blocking control in assays to test for specificity of this LTB4DH antibody

Restrictions: For Research Use only

## Handling

Format: Lyophilized

Reconstitution: Lyophilized powder. Add distilled water for a 1 mg/mL concentration of LTB0 H antibody in PBS

Concentration: Lot specific

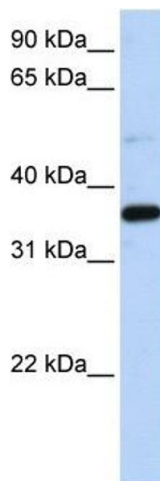
Buffer: PBS

Handling Advice: Avoid repeated freeze/thaw cycles.  
Dilute only prior to immediate use.

Storage: 4 °C/-20 °C

Storage Comment: Store at 2-8 °C for short periods. For longer periods of storage, store at -20 °C.

## Images



### Western Blotting

**Image 1.** LTB4DH antibody used at 1 ug/ml to detect target protein.