

Datasheet for ABIN632825
anti-C4orf22 antibody (N-Term)



[Go to Product page](#)

1 Image

Overview

Quantity:	100 µL
Target:	C4orf22
Binding Specificity:	N-Term
Reactivity:	Human, Mouse
Host:	Rabbit
Clonality:	Polyclonal
Conjugate:	This C4orf22 antibody is un-conjugated
Application:	Western Blotting (WB)

Product Details

Immunogen:	C4 ORF22 antibody was raised using the N terminal Of C4 rf22 corresponding to a region with amino acids YLEDETLARQLVELGYRGTGERVKREDFEARKAAIEIARLAERAQQKTLT
Specificity:	C4 ORF22 antibody was raised against the N terminal Of C4 rf22
Purification:	Affinity purified

Target Details

Target:	C4orf22
Alternative Name:	C4ORF22 (C4orf22 Products)
Background:	The specific function of C4orf22 is not yet known.
Molecular Weight:	27 kDa (MW of target protein)

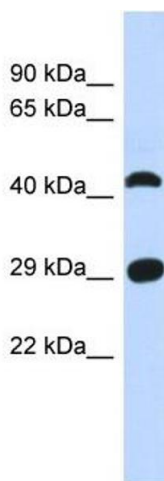
Application Details

Application Notes:	WB: 1 µg/mL Optimal conditions should be determined by the investigator.
Comment:	C4ORF22 Blocking Peptide, catalog no. 33R-10163, is also available for use as a blocking control in assays to test for specificity of this C4ORF22 antibody
Restrictions:	For Research Use only

Handling

Format:	Lyophilized
Reconstitution:	Lyophilized powder. Add distilled water for a 1 mg/mL concentration of C0 RF22 antibody in PBS
Concentration:	Lot specific
Buffer:	PBS
Handling Advice:	Avoid repeated freeze/thaw cycles. Dilute only prior to immediate use.
Storage:	4 °C/-20 °C
Storage Comment:	Store at 2-8 °C for short periods. For longer periods of storage, store at -20 °C.

Images



Western Blotting

Image 1. C4ORF22 antibody used at 1 ug/ml to detect target protein.