

Datasheet for ABIN632845
anti-WDR53 antibody (Middle Region)



[Go to Product page](#)

1 Image

Overview

Quantity:	100 µL
Target:	WDR53
Binding Specificity:	Middle Region
Reactivity:	Human, Mouse, Rat
Host:	Rabbit
Clonality:	Polyclonal
Conjugate:	This WDR53 antibody is un-conjugated
Application:	Western Blotting (WB)

Product Details

Immunogen:	WDR53 antibody was raised using the middle region of WDR53 corresponding to a region with amino acids NLLASADDSGAIKILDLENKKVIRSLKRHSNICSSVAFRPQRPQSLVSCG
Specificity:	WDR53 antibody was raised against the middle region of WDR53
Purification:	Affinity purified

Target Details

Target:	WDR53
Alternative Name:	WDR53 (WDR53 Products)
Background:	The function of WDR53 protein is not widely studied, and is yet to be elucidated fully.
Molecular Weight:	39 kDa (MW of target protein)

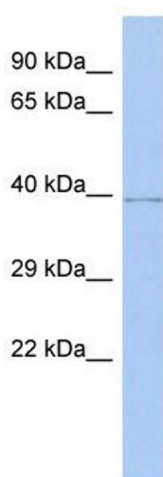
Application Details

Application Notes:	WB: 1 µg/mL Optimal conditions should be determined by the investigator.
Comment:	WDR53 Blocking Peptide, catalog no. 33R-6765, is also available for use as a blocking control in assays to test for specificity of this WDR53 antibody
Restrictions:	For Research Use only

Handling

Format:	Lyophilized
Reconstitution:	Lyophilized powder. Add distilled water for a 1 mg/mL concentration of WDR53 antibody in PBS
Concentration:	Lot specific
Buffer:	PBS
Handling Advice:	Avoid repeated freeze/thaw cycles. Dilute only prior to immediate use.
Storage:	4 °C/-20 °C
Storage Comment:	Store at 2-8 °C for short periods. For longer periods of storage, store at -20 °C.

Images



Western Blotting

Image 1. WDR53 antibody used at 1 ug/ml to detect target protein.