

Datasheet for ABIN632852
anti-ZCCHC13 antibody (Middle Region)



[Go to Product page](#)

1 Image

Overview

Quantity:	100 µL
Target:	ZCCHC13
Binding Specificity:	Middle Region
Reactivity:	Human
Host:	Rabbit
Clonality:	Polyclonal
Conjugate:	This ZCCHC13 antibody is un-conjugated
Application:	Western Blotting (WB)

Product Details

Immunogen:	ZCCHC13 antibody was raised using the middle region of ZCCHC13 corresponding to a region with amino acids GKLGHIQKDCAQVKCYRCGEIGHVAINCASKARPGQLLPLRQIPTSSQGMS
Specificity:	ZCCHC13 antibody was raised against the middle region of ZCCHC13
Purification:	Affinity purified

Target Details

Target:	ZCCHC13
Alternative Name:	ZCCHC13 (ZCCHC13 Products)
Background:	The function of ZCCHC13 protein is not widely studied, and is yet to be elucidated fully.
Molecular Weight:	18 kDa (MW of target protein)

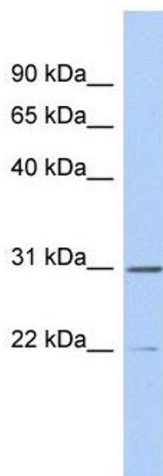
Application Details

Application Notes:	WB: 1 µg/mL Optimal conditions should be determined by the investigator.
Comment:	ZCCHC13 Blocking Peptide, catalog no. 33R-3370, is also available for use as a blocking control in assays to test for specificity of this ZCCHC13 antibody
Restrictions:	For Research Use only

Handling

Format:	Lyophilized
Reconstitution:	Lyophilized powder. Add distilled water for a 1 mg/mL concentration of ZCCHC13 antibody in PBS
Concentration:	Lot specific
Buffer:	PBS
Handling Advice:	Avoid repeated freeze/thaw cycles. Dilute only prior to immediate use.
Storage:	4 °C/-20 °C
Storage Comment:	Store at 2-8 °C for short periods. For longer periods of storage, store at -20 °C.

Images



Western Blotting

Image 1. ZCCHC13 antibody used at 1 ug/ml to detect target protein.