

Datasheet for ABIN632866
anti-CALHM3 antibody (C-Term)



[Go to Product page](#)

1 Image

Overview

Quantity:	100 µL
Target:	CALHM3
Binding Specificity:	C-Term
Reactivity:	Human
Host:	Rabbit
Clonality:	Polyclonal
Conjugate:	This CALHM3 antibody is un-conjugated
Application:	Western Blotting (WB)

Product Details

Immunogen:	FAM26 A antibody was raised using the C terminal Of Fam26 corresponding to a region with amino acids RSELQARGLRGNAGRRLELPAVPEPPEGLDSGSGKAHLRAISSREQVDR
Specificity:	FAM26 A antibody was raised against the C terminal Of Fam26
Purification:	Affinity purified

Target Details

Target:	CALHM3
Alternative Name:	FAM26A (CALHM3 Products)
Background:	The function of FAM26 protein is not widely studied, and is yet to be elucidated fully.
Molecular Weight:	38 kDa (MW of target protein)

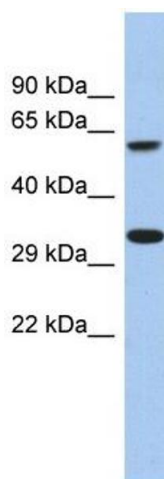
Application Details

Application Notes:	WB: 1 µg/mL Optimal conditions should be determined by the investigator.
Comment:	FAM26A Blocking Peptide, catalog no. 33R-8178, is also available for use as a blocking control in assays to test for specificity of this FAM26A antibody
Restrictions:	For Research Use only

Handling

Format:	Lyophilized
Reconstitution:	Lyophilized powder. Add distilled water for a 1 mg/mL concentration of FAM20 antibody in PBS
Concentration:	Lot specific
Buffer:	PBS
Handling Advice:	Avoid repeated freeze/thaw cycles. Dilute only prior to immediate use.
Storage:	4 °C/-20 °C
Storage Comment:	Store at 2-8 °C for short periods. For longer periods of storage, store at -20 °C.

Images



Western Blotting

Image 1. FAM26A antibody used at 1 µg/ml to detect target protein.