

Datasheet for ABIN632875

**anti-Chromosome 1 Open Reading Frame 190 (C1orf190)
(Middle Region) antibody**[Go to Product page](#)**1** Image

Overview

Quantity:	100 µL
Target:	Chromosome 1 Open Reading Frame 190 (C1orf190)
Binding Specificity:	Middle Region
Reactivity:	Human
Host:	Rabbit
Clonality:	Polyclonal
Conjugate:	Un-conjugated
Application:	Western Blotting (WB)

Product Details

Immunogen:	C1 ORF190 antibody was raised using the middle region of C1 rf190 corresponding to a region with amino acids SIGSFLDTVAPSELDEQGPPGAPRSEMDWAKVIAGGERARTEVDVAATRL
Specificity:	C1 ORF190 antibody was raised against the middle region of C1 rf190
Purification:	Affinity purified

Target Details

Target:	Chromosome 1 Open Reading Frame 190 (C1orf190)
Alternative Name:	C10RF190 (C1orf190 Products)
Background:	The function of Chromosome 1 ORF protein is not widely studied, and is yet to be elucidated fully.

Target Details

Molecular Weight: 26 kDa (MW of target protein)

Application Details

Application Notes: WB: 1 µg/mL
Optimal conditions should be determined by the investigator.

Comment: C10RF190 Blocking Peptide, catalog no. 33R-8527, is also available for use as a blocking control in assays to test for specificity of this C10RF190 antibody

Restrictions: For Research Use only

Handling

Format: Lyophilized

Reconstitution: Lyophilized powder. Add distilled water for a 1 mg/mL concentration of C0 RF190 antibody in PBS

Concentration: Lot specific

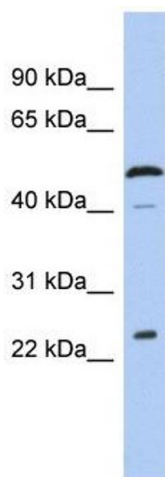
Buffer: PBS

Handling Advice: Avoid repeated freeze/thaw cycles.
Dilute only prior to immediate use.

Storage: 4 °C/-20 °C

Storage Comment: Store at 2-8 °C for short periods. For longer periods of storage, store at -20 °C.

Images



Western Blotting

Image 1. C10RF190 antibody used at 1 ug/ml to detect target protein.