

Datasheet for ABIN632887
anti-HMGCLL1 antibody (N-Term)



[Go to Product page](#)

1 Image

Overview

| | |
|----------------------|--|
| Quantity: | 100 µL |
| Target: | HMGCLL1 |
| Binding Specificity: | N-Term |
| Reactivity: | Human |
| Host: | Rabbit |
| Clonality: | Polyclonal |
| Conjugate: | This HMGCLL1 antibody is un-conjugated |
| Application: | Western Blotting (WB) |

Product Details

| | |
|---------------|---|
| Immunogen: | HMGCLL1 antibody was raised using the N terminal of HMGCLL1 corresponding to a region with amino acids MGNVPSAVKHCLS _Y QQLLREHLWIGDSVAGALDPAQETS _Q LSGLPEFVKI |
| Specificity: | HMGCLL1 antibody was raised against the N terminal of HMGCLL1 |
| Purification: | Affinity purified |

Target Details

| | |
|-------------------|--|
| Target: | HMGCLL1 |
| Alternative Name: | HMGCLL1 (HMGCLL1 Products) |
| Background: | HMGCLL1 is involved in the catabolism of branched amino acids such as leucine. |
| Molecular Weight: | 36 kDa (MW of target protein) |

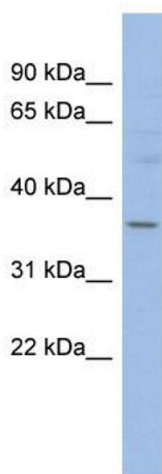
Application Details

| | |
|--------------------|--|
| Application Notes: | WB: 1 µg/mL Optimal conditions should be determined by the investigator. |
| Comment: | HMGCLL1 Blocking Peptide, catalog no. 33R-6052, is also available for use as a blocking control in assays to test for specificity of this HMGCLL1 antibody |
| Restrictions: | For Research Use only |

Handling

| | |
|------------------|--|
| Format: | Lyophilized |
| Reconstitution: | Lyophilized powder. Add distilled water for a 1 mg/mL concentration of HMGCLL1 antibody in PBS |
| Concentration: | Lot specific |
| Buffer: | PBS |
| Handling Advice: | Avoid repeated freeze/thaw cycles. Dilute only prior to immediate use. |
| Storage: | 4 °C/-20 °C |
| Storage Comment: | Store at 2-8 °C for short periods. For longer periods of storage, store at -20 °C. |

Images



Western Blotting

Image 1. HMGCLL1 antibody used at 1 ug/ml to detect target protein.