

Datasheet for ABIN632898
anti-PSMA5 antibody[Go to Product page](#)

1 Image

Overview

Quantity:	100 µL
Target:	PSMA5
Reactivity:	Human, Mouse, Rat, Drosophila melanogaster, C. elegans
Host:	Rabbit
Clonality:	Polyclonal
Conjugate:	This PSMA5 antibody is un-conjugated
Application:	Western Blotting (WB)

Product Details

Immunogen:	PSMA5 antibody was raised using a synthetic peptide corresponding to a region with amino acids MFLTRSEYDRGVNTFSPEGRLFQVEYAIEAIKLGSTAIGIQTSEGVCLAV
Purification:	Affinity purified

Target Details

Target:	PSMA5
Alternative Name:	PSMA5 (PSMA5 Products)
Background:	The proteasome is a multicatalytic proteinase complex with a highly ordered ring-shaped 20S core structure. The core structure is composed of 4 rings of 28 non-identical subunits.
Molecular Weight:	26 kDa (MW of target protein)
Pathways:	Mitotic G1-G1/S Phases , DNA Replication , Synthesis of DNA

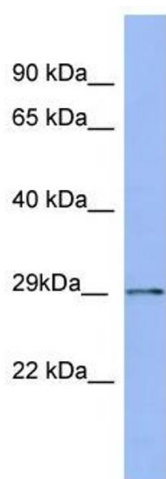
Application Details

Application Notes:	WB: 1 µg/mL Optimal conditions should be determined by the investigator.
Comment:	PSMA5 Blocking Peptide, catalog no. 33R-5998, is also available for use as a blocking control in assays to test for specificity of this PSMA5 antibody
Restrictions:	For Research Use only

Handling

Format:	Lyophilized
Reconstitution:	Lyophilized powder. Add distilled water for a 1 mg/mL concentration of PSMA5 antibody in PBS
Concentration:	Lot specific
Buffer:	PBS
Handling Advice:	Avoid repeated freeze/thaw cycles.
Storage:	4 °C/-20 °C
Storage Comment:	Store at 2-8 °C for short periods. For longer periods of storage, store at -20 °C.

Images



Western Blotting

Image 1. PSMA5 antibody used at 1 ug/ml to detect target protein.