

Datasheet for ABIN632921
anti-C20orf111 antibody (N-Term)



[Go to Product page](#)

1 Image

Overview

Quantity:	100 µL
Target:	C20orf111
Binding Specificity:	N-Term
Reactivity:	Human, Mouse, Rat
Host:	Rabbit
Clonality:	Polyclonal
Conjugate:	This C20orf111 antibody is un-conjugated
Application:	Western Blotting (WB)

Product Details

Immunogen:	C20 ORF111 antibody was raised using the N terminal Of C20 rf111 corresponding to a region with amino acids RGAVRTQRRRRSKSPVLHPPKFIHCSTIASSSSSQLKHKSQTDSPDGSSG
Specificity:	C20 ORF111 antibody was raised against the N terminal Of C20 rf111
Purification:	Affinity purified

Target Details

Target:	C20orf111
Alternative Name:	C20ORF111 (C20orf111 Products)
Background:	The function of Chromosome 20 ORF protein is not widely studied, and is yet to be elucidated fully.

Target Details

Molecular Weight: 32 kDa (MW of target protein)

Application Details

Application Notes: WB: 1 µg/mL
Optimal conditions should be determined by the investigator.

Comment: C200RF111 Blocking Peptide, catalog no. 33R-7916, is also available for use as a blocking control in assays to test for specificity of this C200RF111 antibody

Restrictions: For Research Use only

Handling

Format: Lyophilized

Reconstitution: Lyophilized powder. Add distilled water for a 1 mg/mL concentration of C20 RF111 antibody in PBS

Concentration: Lot specific

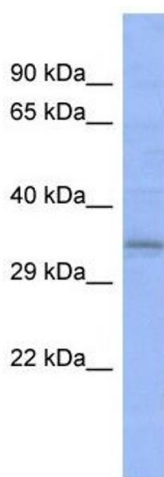
Buffer: PBS

Handling Advice: Avoid repeated freeze/thaw cycles.
Dilute only prior to immediate use.

Storage: 4 °C/-20 °C

Storage Comment: Store at 2-8 °C for short periods. For longer periods of storage, store at -20 °C.

Images



Western Blotting

Image 1. C200RF111 antibody used at 1 ug/ml to detect target protein.