

Datasheet for ABIN632935
anti-MAP7D1 antibody (N-Term)



[Go to Product page](#)

1 Image

Overview

Quantity:	100 µL
Target:	MAP7D1
Binding Specificity:	N-Term
Reactivity:	Human, Mouse, Rat
Host:	Rabbit
Clonality:	Polyclonal
Conjugate:	This MAP7D1 antibody is un-conjugated
Application:	Western Blotting (WB)

Product Details

Immunogen:	MAP7 D1 antibody was raised using the N terminal of MAP7 1 corresponding to a region with amino acids RRRLEEQLKAEQRRRAALEERQRQKLEKNKERYEAAIQRSVKKTWAEIRQ
Specificity:	MAP7 D1 antibody was raised against the N terminal of MAP7 1
Purification:	Affinity purified

Target Details

Target:	MAP7D1
Alternative Name:	MAP7D1 (MAP7D1 Products)
Background:	The function of MAP7 protein is not widely studied, and is yet to be elucidated fully.
Molecular Weight:	93 kDa (MW of target protein)

Target Details

Pathways: [SARS-CoV-2 Protein Interactome](#), [The Global Phosphorylation Landscape of SARS-CoV-2 Infection](#)

Application Details

Application Notes: WB: 1 µg/mL
Optimal conditions should be determined by the investigator.

Comment: MAP7D1 Blocking Peptide, catalog no. 33R-8156, is also available for use as a blocking control in assays to test for specificity of this MAP7D1 antibody

Restrictions: For Research Use only

Handling

Format: Lyophilized

Reconstitution: Lyophilized powder. Add distilled water for a 1 mg/mL concentration of MAP0 1 antibody in PBS

Concentration: Lot specific

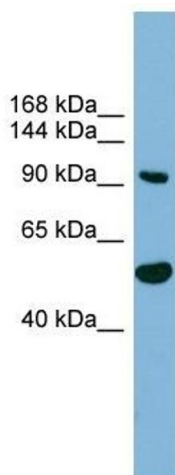
Buffer: PBS

Handling Advice: Avoid repeated freeze/thaw cycles.
Dilute only prior to immediate use.

Storage: 4 °C/-20 °C

Storage Comment: Store at 2-8 °C for short periods. For longer periods of storage, store at -20 °C.

Images



Western Blotting

Image 1. MAP7D1 antibody used at 1 µg/ml to detect target protein.