

Datasheet for ABIN632937  
**anti-DNAAF2 antibody (N-Term)**



[Go to Product page](#)

1 Image

## Overview

Quantity:	100 µL
Target:	DNAAF2 (C14orf104)
Binding Specificity:	N-Term
Reactivity:	Human
Host:	Rabbit
Clonality:	Polyclonal
Conjugate:	This DNAAF2 antibody is un-conjugated
Application:	Western Blotting (WB)

## Product Details

Immunogen:	C14 ORF104 antibody was raised using the N terminal Of C14 rf104 corresponding to a region with amino acids MFSQYAEELTDPENRRRYEAEITALERERGVEVRFVHPEPGHVLRTSLDG
Specificity:	C14 ORF104 antibody was raised against the N terminal Of C14 rf104
Purification:	Affinity purified

## Target Details

Target:	DNAAF2 (C14orf104)
Alternative Name:	C14ORF104 ( <a href="#">C14orf104 Products</a> )
Background:	This protein is highly conserved and involved in the preassembly of dynein arm complexes which power cilia. These complexes are found in some cilia and are assembled in the cytoplasm prior to transport for cilia formation. Mutations in this gene have been associated

## Target Details

---

with primary ciliary dyskinesia. Multiple transcript variants encoding different isoforms have been found for this gene.

Molecular Weight: 91 kDa (MW of target protein)

## Application Details

---

Application Notes: WB: 1 µg/mL  
Optimal conditions should be determined by the investigator.

Comment: C14ORF104 Blocking Peptide, catalog no. 33R-6005, is also available for use as a blocking control in assays to test for specificity of this C14ORF104 antibody

Restrictions: For Research Use only

## Handling

---

Format: Lyophilized

Reconstitution: Lyophilized powder. Add distilled water for a 1 mg/mL concentration of C10 RF104 antibody in PBS

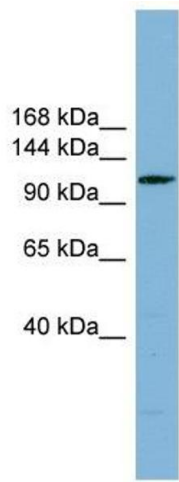
Concentration: Lot specific

Buffer: PBS

Handling Advice: Avoid repeated freeze/thaw cycles.  
Dilute only prior to immediate use.

Storage: 4 °C/-20 °C

Storage Comment: Store at 2-8 °C for short periods. For longer periods of storage, store at -20 °C.



### Western Blotting

**Image 1.** C14ORF104 antibody used at 1 ug/ml to detect target protein.