

Datasheet for ABIN632938 **anti-SMG8 antibody (Middle Region)**



[Go to Product page](#)

1 Image

Overview

Quantity:	100 µL
Target:	SMG8
Binding Specificity:	Middle Region
Reactivity:	Human
Host:	Rabbit
Clonality:	Polyclonal
Conjugate:	This SMG8 antibody is un-conjugated
Application:	Western Blotting (WB)

Product Details

Immunogen:	C17 ORF71 antibody was raised using the middle region of C17 rf71 corresponding to a region with amino acids HCVHKFHSLPKSGEKPEADRNPPVLYHNSRARSTGACNCGRKQAPRDDPF
Specificity:	C17 ORF71 antibody was raised against the middle region of C17 rf71
Purification:	Affinity purified

Target Details

Target:	SMG8
Alternative Name:	C17ORF71 (SMG8 Products)
Background:	The C17ORF71 protein is a component of the SMG1C complex, a mRNA surveillance complex that recognises and degrades mRNAs containing premature translation termination codons (PTCs) via the nonsense-mediated mRNA decay (NMD). The complex probably acts by

Target Details

associating with ribosomes during translation termination on mRNPs. If an exon junction complex (EJC) is located 50-55 or more nucleotides downstream from the termination codon, SMG1 phosphorylates UPF1/RENT1, triggering nonsense-mediated mRNA decay (NMD).

Molecular Weight: 110 kDa (MW of target protein)

Application Details

Application Notes: WB: 1 µg/mL
Optimal conditions should be determined by the investigator.

Comment: C17ORF71 Blocking Peptide, catalog no. 33R-3702, is also available for use as a blocking control in assays to test for specificity of this C17ORF71 antibody

Restrictions: For Research Use only

Handling

Format: Lyophilized

Reconstitution: Lyophilized powder. Add distilled water for a 1 mg/mL concentration of C10 RF71 antibody in PBS

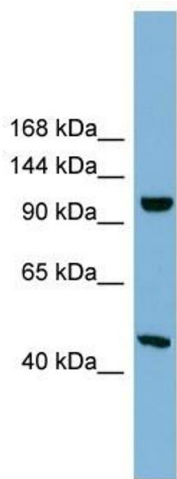
Concentration: Lot specific

Buffer: PBS

Handling Advice: Avoid repeated freeze/thaw cycles.
Dilute only prior to immediate use.

Storage: 4 °C/-20 °C

Storage Comment: Store at 2-8 °C for short periods. For longer periods of storage, store at -20 °C.



Western Blotting

Image 1. C17ORF71 antibody used at 1 ug/ml to detect target protein.