

## Datasheet for ABIN632950 **anti-SASH3 antibody (N-Term)**



[Go to Product page](#)

### 1 Image

#### Overview

Quantity:	100 µL
Target:	SASH3
Binding Specificity:	N-Term
Reactivity:	Human
Host:	Rabbit
Clonality:	Polyclonal
Conjugate:	This SASH3 antibody is un-conjugated
Application:	Western Blotting (WB)

#### Product Details

Immunogen:	CXORF9 antibody was raised using the N terminal Of Cxorf9 corresponding to a region with amino acids KPSSPVVSEKEFNLDDNIPEDDSGVPTPEDAGKSGKKGKKWRAVISRTM
Specificity:	CXORF9 antibody was raised against the N terminal Of Cxorf9
Purification:	Affinity purified

#### Target Details

Target:	SASH3
Alternative Name:	<a href="#">CXORF9 (SASH3 Products)</a>
Background:	The CXORF9 protein contains a Src homology-3 (SH3) domain and a sterile alpha motif (SAM), both of which are found in proteins involved in cell signaling. This protein may function as a signaling adapter protein in lymphocytes.

## Target Details

---

Molecular Weight:	41 kDa (MW of target protein)
Pathways:	<a href="#">Regulation of Leukocyte Mediated Immunity</a> , <a href="#">Positive Regulation of Immune Effector Process</a> , <a href="#">Production of Molecular Mediator of Immune Response</a>

## Application Details

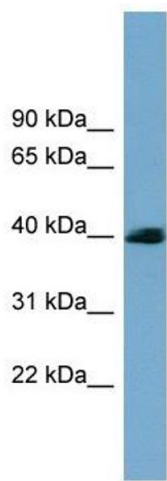
---

Application Notes:	WB: 1 µg/mL Optimal conditions should be determined by the investigator.
Comment:	CXORF9 Blocking Peptide, catalog no. 33R-4594, is also available for use as a blocking control in assays to test for specificity of this CXORF9 antibody
Restrictions:	For Research Use only

## Handling

---

Format:	Lyophilized
Reconstitution:	Lyophilized powder. Add distilled water for a 1 mg/mL concentration of CXORF9 antibody in PBS
Concentration:	Lot specific
Buffer:	PBS
Handling Advice:	Avoid repeated freeze/thaw cycles. Dilute only prior to immediate use.
Storage:	4 °C/-20 °C
Storage Comment:	Store at 2-8 °C for short periods. For longer periods of storage, store at -20 °C.



### Western Blotting

**Image 1.** CXORF9 antibody used at 1 ug/ml to detect target protein.