

Datasheet for ABIN632957
anti-BTF3P13 antibody (Middle Region)



[Go to Product page](#)

1 Image

Overview

Quantity:	100 µL
Target:	BTF3P13
Binding Specificity:	Middle Region
Reactivity:	Human
Host:	Rabbit
Clonality:	Polyclonal
Conjugate:	This BTF3P13 antibody is un-conjugated
Application:	Western Blotting (WB)

Product Details

Immunogen:	BTF3 L3 antibody was raised using the middle region of BTF3 3 corresponding to a region with amino acids CRSTDHEPGKLAQLQAQVRIGGKGT AHRKKKVFHRTATADDDKKLQFSLKK
Specificity:	BTF3 L3 antibody was raised against the middle region of BTF3 3
Purification:	Affinity purified

Target Details

Target:	BTF3P13
Alternative Name:	BTF3L3 (BTF3P13 Products)
Background:	BTF3L3 is a putative member of the BTF3 family of transcription factors and is thought to represent a pseudogene.

Target Details

Molecular Weight: 23 kDa (MW of target protein)

Application Details

Application Notes: WB: 1 µg/mL
Optimal conditions should be determined by the investigator.

Comment: BTF3L3 Blocking Peptide, catalog no. 33R-1800, is also available for use as a blocking control in assays to test for specificity of this BTF3L3 antibody

Restrictions: For Research Use only

Handling

Format: Lyophilized

Reconstitution: Lyophilized powder. Add distilled water for a 1 mg/mL concentration of BTF0 3 antibody in PBS

Concentration: Lot specific

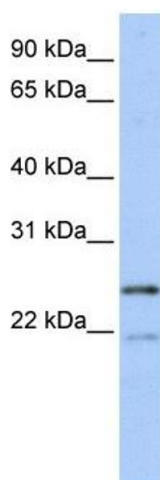
Buffer: PBS

Handling Advice: Avoid repeated freeze/thaw cycles.
Dilute only prior to immediate use.

Storage: 4 °C/-20 °C

Storage Comment: Store at 2-8 °C for short periods. For longer periods of storage, store at -20 °C.

Images



Western Blotting

Image 1. BTF3L3 antibody used at 1 ug/ml to detect target protein.