

Datasheet for ABIN632969
anti-IPP antibody (C-Term)



[Go to Product page](#)

1 Image

Overview

Quantity:	100 µL
Target:	IPP
Binding Specificity:	C-Term
Reactivity:	Human, Rat, Mouse
Host:	Rabbit
Clonality:	Polyclonal
Conjugate:	This IPP antibody is un-conjugated
Application:	Western Blotting (WB)

Product Details

Immunogen:	IPP antibody was raised using the C terminal of IPP corresponding to a region with amino acids EMQGLIYVIGGISNEGIELRSFEVYDPLSKRWSPLPPMGTRRAYLGVAAL
Specificity:	IPP antibody was raised against the C terminal of IPP
Purification:	Affinity purified

Target Details

Target:	IPP
Alternative Name:	IPP (IPP Products)
Background:	IPP is a member of the kelch family of proteins, which is characterized by a 50 amino acid repeat which interacts with actin.

Target Details

Molecular Weight: 65 kDa (MW of target protein)

Application Details

Application Notes: WB: 1 µg/mL
Optimal conditions should be determined by the investigator.

Comment: IPP Blocking Peptide, catalog no. 33R-2592, is also available for use as a blocking control in assays to test for specificity of this IPP antibody

Restrictions: For Research Use only

Handling

Format: Lyophilized

Reconstitution: Lyophilized powder. Add distilled water for a 1 mg/mL concentration of IPP antibody in PBS

Concentration: Lot specific

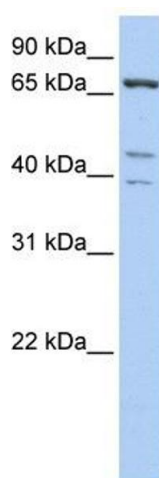
Buffer: PBS

Handling Advice: Avoid repeated freeze/thaw cycles.
Dilute only prior to immediate use.

Storage: 4 °C/-20 °C

Storage Comment: Store at 2-8 °C for short periods. For longer periods of storage, store at -20 °C.

Images



Western Blotting

Image 1. IPP antibody used at 1 ug/ml to detect target protein.