

Datasheet for ABIN632986
anti-GSE1/KIAA0182 antibody (N-Term)



[Go to Product page](#)

1 Image

Overview

| | |
|----------------------|----------------------------------------------|
| Quantity: | 100 µL |
| Target: | GSE1/KIAA0182 (GSE1) |
| Binding Specificity: | N-Term |
| Reactivity: | Human, Mouse, Rat |
| Host: | Rabbit |
| Clonality: | Polyclonal |
| Conjugate: | This GSE1/KIAA0182 antibody is un-conjugated |
| Application: | Western Blotting (WB) |

Product Details

| | |
|---------------|------------------------------------------------------------------------------------------------------------------------------------------------------------|
| Immunogen: | KIAA0182 antibody was raised using the N terminal of KIAA0182 corresponding to a region with amino acids EEPRGSSLSESSPVSSPATNHSSPASTPKRVPMGPIIVPPGGHSVPSTP |
| Specificity: | KIAA0182 antibody was raised against the N terminal of KIAA0182 |
| Purification: | Affinity purified |

Target Details

| | |
|-------------------|------------------------------------------------------------------------------------------|
| Target: | GSE1/KIAA0182 (GSE1) |
| Alternative Name: | KIAA0182 (GSE1 Products) |
| Background: | The function of KIAA0182 has not been widely studied, and is yet to be fully elucidated. |
| Molecular Weight: | 136 kDa (MW of target protein) |

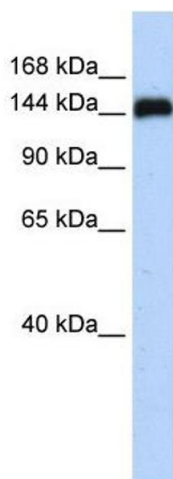
Application Details

| | |
|--------------------|--------------------------------------------------------------------------------------------------------------------------------------------------------------|
| Application Notes: | WB: 1 µg/mL Optimal conditions should be determined by the investigator. |
| Comment: | KIAA0182 Blocking Peptide, catalog no. 33R-2379, is also available for use as a blocking control in assays to test for specificity of this KIAA0182 antibody |
| Restrictions: | For Research Use only |

Handling

| | |
|------------------|-------------------------------------------------------------------------------------------------|
| Format: | Lyophilized |
| Reconstitution: | Lyophilized powder. Add distilled water for a 1 mg/mL concentration of KIAA0182 antibody in PBS |
| Concentration: | Lot specific |
| Buffer: | PBS |
| Handling Advice: | Avoid repeated freeze/thaw cycles. Dilute only prior to immediate use. |
| Storage: | 4 °C/-20 °C |
| Storage Comment: | Store at 2-8 °C for short periods. For longer periods of storage, store at -20 °C. |

Images



Western Blotting

Image 1. KIAA0182 antibody used at 1 ug/ml to detect target protein.