

Datasheet for ABIN633015  
**anti-C6orf154 antibody (Middle Region)**



[Go to Product page](#)

1 Image

## Overview

|                      |   |
|----------------------|---|
| Quantity:            | 100 µL                                  |
| Target:              | C6orf154                                |
| Binding Specificity: | Middle Region                           |
| Reactivity:          | Rat, Human, Mouse                       |
| Host:                | Rabbit                                  |
| Clonality:           | Polyclonal                              |
| Conjugate:           | This C6orf154 antibody is un-conjugated |
| Application:         | Western Blotting (WB)                   |

## Product Details

|               |   |
|---------------|---|
| Immunogen:    | C6 ORF154 antibody was raised using the middle region of C6 rf154 corresponding to a region with amino acids NLDYNPLGDHVAGMLAVAVASSRTLEVLDLEGTGLTNQSAQTLMDMVENY |
| Specificity:  | C6 ORF154 antibody was raised against the middle region of C6 rf154   |
| Purification: | Affinity purified   |

## Target Details

|                   |  |
|-------------------|--|
| Target:           | C6orf154   |
| Alternative Name: | C6ORF154 ( <a href="#">C6orf154 Products</a> )   |
| Background:       | The function of Chromosome 6 ORF protein is not widely studied, and is yet to be elucidated fully. |

## Target Details

---

Molecular Weight: 33 kDa (MW of target protein)

## Application Details

---

Application Notes: WB: 1 µg/mL  
Optimal conditions should be determined by the investigator.

Comment: C6ORF154 Blocking Peptide, catalog no. 33R-6754, is also available for use as a blocking control in assays to test for specificity of this C6ORF154 antibody

Restrictions: For Research Use only

## Handling

---

Format: Lyophilized

Reconstitution: Lyophilized powder. Add distilled water for a 1 mg/mL concentration of C6ORF154 antibody in PBS

Concentration: Lot specific

Buffer: PBS

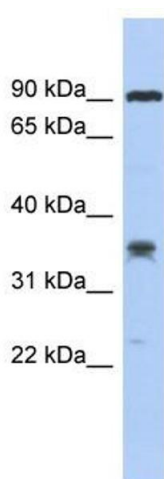
Handling Advice: Avoid repeated freeze/thaw cycles.  
Dilute only prior to immediate use.

Storage: 4 °C/-20 °C

Storage Comment: Store at 2-8 °C for short periods. For longer periods of storage, store at -20 °C.

## Images

---



### Western Blotting

**Image 1.** C6ORF154 antibody used at 1 µg/ml to detect target protein.