

Datasheet for ABIN633038
anti-ATPAF1 antibody (N-Term)



[Go to Product page](#)

1 Image

Overview

Quantity:	100 µL
Target:	ATPAF1
Binding Specificity:	N-Term
Reactivity:	Human
Host:	Rabbit
Clonality:	Polyclonal
Conjugate:	This ATPAF1 antibody is un-conjugated
Application:	Western Blotting (WB)

Product Details

Immunogen:	ATPAF1 antibody was raised using the N terminal of ATPAF1 corresponding to a region with amino acids GLGLVSPAQLRVFPVRPGSGRPEGGADSSGVGAEAEELQANPFYDRYRDKI
Specificity:	ATPAF1 antibody was raised against the N terminal of ATPAF1
Purification:	Affinity purified

Target Details

Target:	ATPAF1
Alternative Name:	ATPAF1 (ATPAF1 Products)
Background:	This gene encodes an assembly factor for the F(1) component of the mitochondrial ATP synthase. This protein binds specifically to the F1 beta subunit and is thought to prevent this subunit from forming nonproductive homooligomers during enzyme assembly. Alternatively

Target Details

spliced transcript variants have been identified, but the biological validity of some of these variants has not been determined.

Molecular Weight: 29 kDa (MW of target protein)

Application Details

Application Notes: WB: 1 µg/mL
Optimal conditions should be determined by the investigator.

Comment: ATPAF1 Blocking Peptide, catalog no. 33R-3393, is also available for use as a blocking control in assays to test for specificity of this ATPAF1 antibody

Restrictions: For Research Use only

Handling

Format: Lyophilized

Reconstitution: Lyophilized powder. Add distilled water for a 1 mg/mL concentration of ATPAF1 antibody in PBS

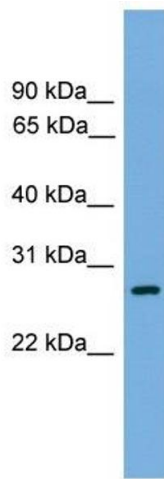
Concentration: Lot specific

Buffer: PBS

Handling Advice: Avoid repeated freeze/thaw cycles.
Dilute only prior to immediate use.

Storage: 4 °C/-20 °C

Storage Comment: Store at 2-8 °C for short periods. For longer periods of storage, store at -20 °C.



Western Blotting

Image 1. ATPAF1 antibody used at 1 ug/ml to detect target protein.