

Datasheet for ABIN633073  
**anti-CPLX2 antibody (N-Term)**



[Go to Product page](#)

2 Images

## Overview

|                      |                                      |
|----------------------|--------------------------------------|
| Quantity:            | 100 µL                               |
| Target:              | CPLX2                                |
| Binding Specificity: | N-Term                               |
| Reactivity:          | Human                                |
| Host:                | Rabbit                               |
| Clonality:           | Polyclonal                           |
| Conjugate:           | This CPLX2 antibody is un-conjugated |
| Application:         | Western Blotting (WB)                |

## Product Details

|               |  |
|---------------|--|
| Immunogen:    | Complexin 2 antibody was raised using the N terminal of CPLX2 corresponding to a region with amino acids MDFVMKQALGGATKDMGKMLGGEEEEKDPDAQKKEEERQEALRQQEEERKA |
| Specificity:  | Complexin 2 antibody was raised against the N terminal of CPLX2  |
| Purification: | Affinity purified  |

## Target Details

|                   |  |
|-------------------|--|
| Target:           | CPLX2  |
| Alternative Name: | Complexin 2 ( <a href="#">CPLX2 Products</a> )   |
| Background:       | Proteins encoded by the complexin/synaphin gene family are cytosolic proteins that function in synaptic vesicle exocytosis. These proteins bind syntaxin, part of the SNAP receptor. The protein product of this gene binds to the SNAP receptor complex and disrupts it, allowing |

## Target Details

---

transmitter release. Two transcript variants encoding the same protein have been found for this gene.

Molecular Weight: 15 kDa (MW of target protein)

Pathways: [Synaptic Vesicle Exocytosis](#)

## Application Details

---

Application Notes: WB: 1 µg/mL  
Optimal conditions should be determined by the investigator.

Comment: Complexin 2 Blocking Peptide, catalog no. 33R-5832, is also available for use as a blocking control in assays to test for specificity of this Complexin 2 antibody

Restrictions: For Research Use only

## Handling

---

Format: Lyophilized

Reconstitution: Lyophilized powder. Add distilled water for a 1 mg/mL concentration of CPLX2 antibody in PBS

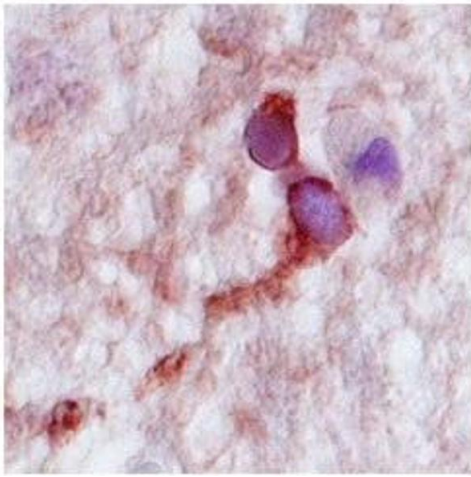
Concentration: Lot specific

Buffer: PBS

Handling Advice: Avoid repeated freeze/thaw cycles.  
Dilute only prior to immediate use.

Storage: 4 °C/-20 °C

Storage Comment: Store at 2-8 °C for short periods. For longer periods of storage, store at -20 °C.



### Immunohistochemistry

**Image 1.** Complexin 2 in human hippocampus was detected using HRP/AEC red color stain.



### Western Blotting

**Image 2.** Complexin 2 antibody used at 1 ug/ml to detect target protein.