

Datasheet for ABIN633077
anti-TUBB4 antibody (N-Term)



[Go to Product page](#)

1 Image

Overview

Quantity:	100 µL
Target:	TUBB4 (TUBB4A)
Binding Specificity:	N-Term
Reactivity:	Human
Host:	Rabbit
Clonality:	Polyclonal
Conjugate:	This TUBB4 antibody is un-conjugated
Application:	Western Blotting (WB)

Product Details

Immunogen:	Beta Tubulin 4 antibody was raised using the N terminal of TUBB4 corresponding to a region with amino acids TYHGSDLQLERINVYYNEATGGNYVPRAVLVDLEPGTMDSVRSRSGPFGQI
Specificity:	Beta Tubulin 4 antibody was raised against the N terminal of TUBB4
Purification:	Affinity purified

Target Details

Target:	TUBB4 (TUBB4A)
Abstract:	TUBB4A Products
Background:	Tubulin is the major constituent of microtubules. It binds two moles of GTP, one at an exchangeable site on the beta chain and one at a non-exchangeable site on the alpha-chain.

Target Details

Molecular Weight: 49 kDa (MW of target protein)

Application Details

Application Notes: WB: 1 µg/mL
Optimal conditions should be determined by the investigator.

Comment: Beta Tubulin 4 Blocking Peptide, catalog no. 33R-9390, is also available for use as a blocking control in assays to test for specificity of this Beta Tubulin 4 antibody

Restrictions: For Research Use only

Handling

Format: Lyophilized

Reconstitution: Lyophilized powder. Add distilled water for a 1 mg/mL concentration of TUBB4 antibody in PBS

Concentration: Lot specific

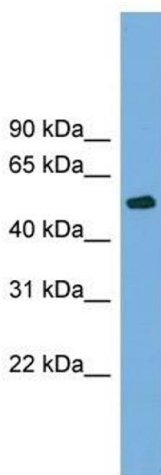
Buffer: PBS

Handling Advice: Avoid repeated freeze/thaw cycles.
Dilute only prior to immediate use.

Storage: 4 °C/-20 °C

Storage Comment: Store at 2-8 °C for short periods. For longer periods of storage, store at -20 °C.

Images



Western Blotting

Image 1. Beta Tubulin 4 antibody used at 1 µg/ml to detect target protein.