

Datasheet for ABIN633108 **anti-AP1m2 antibody (N-Term)**



[Go to Product page](#)

1 Image

Overview

Quantity:	100 µL
Target:	AP1m2
Binding Specificity:	N-Term
Reactivity:	Human
Host:	Rabbit
Clonality:	Polyclonal
Conjugate:	This AP1m2 antibody is un-conjugated
Application:	Western Blotting (WB)

Product Details

Immunogen:	AP1 M2 antibody was raised using the N terminal of AP1 2 corresponding to a region with amino acids MSASAVFILDVKGKPLISRNYKGDVAMSKIEHFMPLLVQREEEGALAPLL
Specificity:	AP1 M2 antibody was raised against the N terminal of AP1 2
Purification:	Affinity purified

Target Details

Target:	AP1m2
Alternative Name:	AP1M2 (AP1m2 Products)
Background:	This gene encodes a subunit of the heterotetrameric adaptor-related protein complex 1 (AP-1), which belongs to the adaptor complexes medium subunits family. This protein is capable of interacting with tyrosine-based sorting signals.

Target Details

Molecular Weight: 48 kDa (MW of target protein)

Application Details

Application Notes: WB: 1 µg/mL
Optimal conditions should be determined by the investigator.

Comment: AP1M2 Blocking Peptide, catalog no. 33R-6400, is also available for use as a blocking control in assays to test for specificity of this AP1M2 antibody

Restrictions: For Research Use only

Handling

Format: Lyophilized

Reconstitution: Lyophilized powder. Add distilled water for a 1 mg/mL concentration of APO 2 antibody in PBS

Concentration: Lot specific

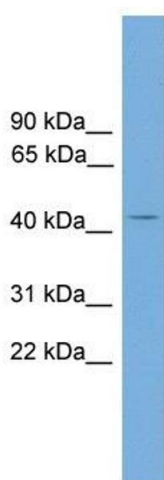
Buffer: PBS

Handling Advice: Avoid repeated freeze/thaw cycles.
Dilute only prior to immediate use.

Storage: 4 °C/-20 °C

Storage Comment: Store at 2-8 °C for short periods. For longer periods of storage, store at -20 °C.

Images



Western Blotting

Image 1. AP1M2 antibody used at 1 ug/ml to detect target protein.