

Datasheet for ABIN633155
anti-NRBF2 antibody (N-Term)



[Go to Product page](#)

1 Image

Overview

Quantity:	100 µL
Target:	NRBF2
Binding Specificity:	N-Term
Reactivity:	Human
Host:	Rabbit
Clonality:	Polyclonal
Conjugate:	This NRBF2 antibody is un-conjugated
Application:	Western Blotting (WB)

Product Details

Immunogen:	NRBF2 antibody was raised using the N terminal of NRBF2 corresponding to a region with amino acids KKAAAYLSEAMKLTQSEQAHLSELELQRDShMKQLLLIQRWkRAQREERL
Specificity:	NRBF2 antibody was raised against the N terminal of NRBF2
Purification:	Affinity purified

Target Details

Target:	NRBF2
Alternative Name:	NRBF2 (NRBF2 Products)
Background:	NRBF2 may modulate transcriptional activation by target nuclear receptors.
Molecular Weight:	32 kDa (MW of target protein)

Target Details

Pathways: [Nuclear Receptor Transcription Pathway](#)

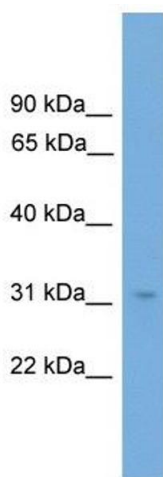
Application Details

Application Notes:	WB: 1 µg/mL Optimal conditions should be determined by the investigator.
Comment:	NRBF2 Blocking Peptide, catalog no. 33R-4448, is also available for use as a blocking control in assays to test for specificity of this NRBF2 antibody
Restrictions:	For Research Use only

Handling

Format:	Lyophilized
Reconstitution:	Lyophilized powder. Add distilled water for a 1 mg/mL concentration of NRBF2 antibody in PBS
Concentration:	Lot specific
Buffer:	PBS
Handling Advice:	Avoid repeated freeze/thaw cycles. Dilute only prior to immediate use.
Storage:	4 °C/-20 °C
Storage Comment:	Store at 2-8 °C for short periods. For longer periods of storage, store at -20 °C.

Images



Western Blotting

Image 1. NRBF2 antibody used at 1 ug/ml to detect target protein.