

## Datasheet for ABIN633161 **anti-PAGE4 antibody**



[Go to Product page](#)

### 1 Image

#### Overview

Quantity:	100 µL
Target:	PAGE4
Reactivity:	Human
Host:	Rabbit
Clonality:	Polyclonal
Conjugate:	This PAGE4 antibody is un-conjugated
Application:	Western Blotting (WB)

#### Product Details

Immunogen:	PAGE4 antibody was raised using a synthetic peptide corresponding to a region with amino acids PPIEERKVEGDCQEMDLEKTRSERGDGSDVKEKTPPNPKHAKTKEAGDGQ
Purification:	Affinity purified

#### Target Details

Target:	PAGE4
Alternative Name:	PAGE4 ( <a href="#">PAGE4 Products</a> )
Background:	This gene is a member of the GAGE family. The GAGE genes are expressed in a variety of tumors and in some fetal and reproductive tissues. This gene is strongly expressed in prostate and prostate cancer, but is also expressed in other male and female reproductive tissues including testis, fallopian tube, uterus, and placenta, as well as in testicular cancer and uterine cancer. The protein encoded by this gene shares sequence similarity with other GAGE/PAGE

## Target Details

proteins, and also belongs to a family of CT (cancer-testis) antigens.

Molecular Weight: 11 kDa (MW of target protein)

## Application Details

Application Notes: WB: 1 µg/mL

Optimal conditions should be determined by the investigator.

Comment: PAGE4 Blocking Peptide, catalog no. 33R-7259, is also available for use as a blocking control in assays to test for specificity of this PAGE4 antibody

Restrictions: For Research Use only

## Handling

Format: Lyophilized

Reconstitution: Lyophilized powder. Add distilled water for a 1 mg/mL concentration of PAGE4 antibody in PBS

Concentration: Lot specific

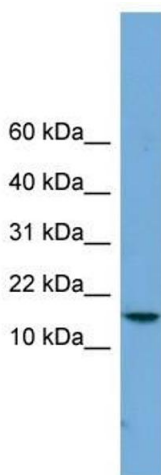
Buffer: PBS

Handling Advice: Avoid repeated freeze/thaw cycles.

Storage: 4 °C/-20 °C

Storage Comment: Store at 2-8 °C for short periods. For longer periods of storage, store at -20 °C.

## Images



### Western Blotting

**Image 1.** PAGE4 antibody used at 1 µg/ml to detect target protein.