

Datasheet for ABIN633171
anti-NAA15 antibody (Middle Region)



[Go to Product page](#)

1 Image

Overview

Quantity:	100 µL
Target:	NAA15
Binding Specificity:	Middle Region
Reactivity:	Human, Mouse, Rat
Host:	Rabbit
Clonality:	Polyclonal
Conjugate:	This NAA15 antibody is un-conjugated
Application:	Western Blotting (WB)

Product Details

Immunogen:	NARG1 antibody was raised using the middle region of NARG1 corresponding to a region with amino acids PPVFNTLRSLYKDKEKVAIIIEELVVGYETSLKSCRLFNPDDGKEEPPTT
Specificity:	NARG1 antibody was raised against the middle region of NARG1
Purification:	Affinity purified

Target Details

Target:	NAA15
Alternative Name:	NARG1 (NAA15 Products)
Background:	The ARD1A-NARG1 complex displays alpha (N-terminal) acetyltransferase activity that may be important for vascular, hematopoietic and neuronal growth and development. NARG1 is required to control retinal neovascularization in adult ocular endothelial cells. In complex with

Target Details

G22P1 and XRCC5 (Ku80), up-regulates transcription from the osteocalcin promoter.

Molecular Weight: 101 kDa (MW of target protein)

Application Details

Application Notes: WB: 1 µg/mL

Optimal conditions should be determined by the investigator.

Comment: NARG1 Blocking Peptide, catalog no. 33R-7288, is also available for use as a blocking control in assays to test for specificity of this NARG1 antibody

Restrictions: For Research Use only

Handling

Format: Lyophilized

Reconstitution: Lyophilized powder. Add distilled water for a 1 mg/mL concentration of NARG1 antibody in PBS

Concentration: Lot specific

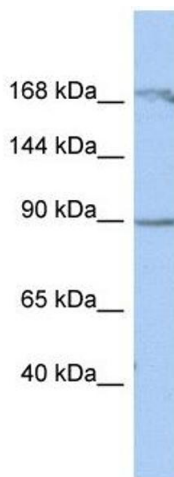
Buffer: PBS

Handling Advice: Avoid repeated freeze/thaw cycles.
Dilute only prior to immediate use.

Storage: 4 °C/-20 °C

Storage Comment: Store at 2-8 °C for short periods. For longer periods of storage, store at -20 °C.

Images



Western Blotting

Image 1. NARG1 antibody used at 1 µg/ml to detect target protein.