

Datasheet for ABIN633173 **anti-MMP19 antibody (N-Term)**

3 Images



[Go to Product page](#)

Overview

Quantity:	100 µL
Target:	MMP19
Binding Specificity:	N-Term
Reactivity:	Human, Dog
Host:	Rabbit
Clonality:	Polyclonal
Conjugate:	This MMP19 antibody is un-conjugated
Application:	Western Blotting (WB), Immunohistochemistry (IHC)

Product Details

Immunogen:	MMP19 antibody was raised using the N terminal of MMP19 corresponding to a region with amino acids ALRAFQEASELPVSGQLDDATRARMRQPRCGLEDPFNQKTLKYLLLRWR
Specificity:	MMP19 antibody was raised against the N terminal of MMP19
Purification:	Affinity purified

Target Details

Target:	MMP19
Alternative Name:	MMP19 (MMP19 Products)
Background:	Proteins of the matrix metalloproteinase (MMP) family are involved in the Breakdown of extracellular matrix in normal physiological processes, such as embryonic development, reproduction, and tissue remodeling. They are also involved in disease processes, such as

Target Details

arthritis and metastasis. Most MMP's are secreted as inactive proproteins which are activated when cleaved by extracellular proteinases. The function of MMP-19 has not been determined. This gene corresponding to this protein was previously referred to as MMP18 but has been renamed matrix metalloproteinase 19 (MMP19). Multiple transcript variants encoding distinct isoforms have been identified for this gene.

Molecular Weight: 56 kDa (MW of target protein)

Application Details

Application Notes: WB: 0.5 µg/mL, IHC: 4-8 µg/mL
Optimal conditions should be determined by the investigator.

Comment: MMP19 Blocking Peptide, catalog no. 33R-1365, is also available for use as a blocking control in assays to test for specificity of this MMP19 antibody

Restrictions: For Research Use only

Handling

Format: Lyophilized

Reconstitution: Lyophilized powder. Add distilled water for a 1 mg/mL concentration of MMP19 antibody in PBS

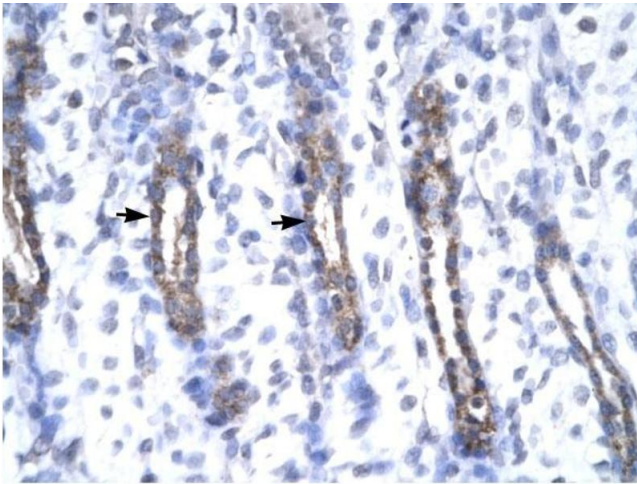
Concentration: Lot specific

Buffer: PBS

Handling Advice: Avoid repeated freeze/thaw cycles.
Dilute only prior to immediate use.

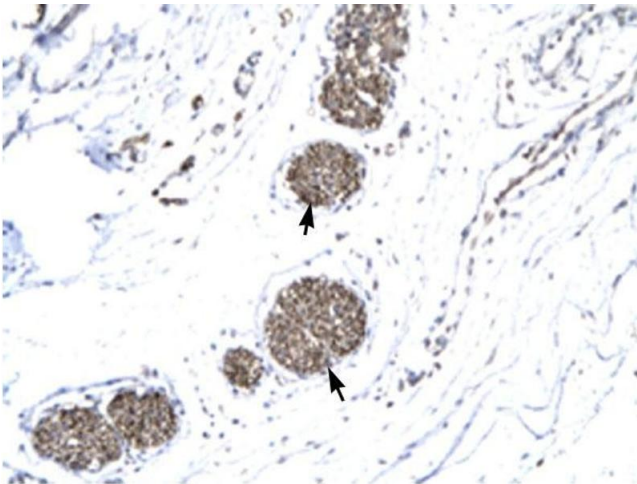
Storage: 4 °C/-20 °C

Storage Comment: Store at 2-8 °C for short periods. For longer periods of storage, store at -20 °C.



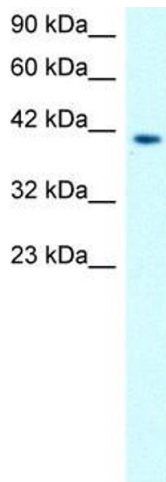
Immunohistochemistry

Image 1. MMP19 antibody was used for immunohistochemistry at a concentration of 4-8 ug/ml to stain Epithelial cells (arrows) in Human Urinary bladder. Magnification is at 400X



Immunohistochemistry

Image 2. MMP19 antibody was used for immunohistochemistry at a concentration of 4-8 ug/ml to stain Ganglionic cells (arrows) in Human urinary bladder. Magnification is at 400X.



Western Blotting

Image 3. MMP19 antibody used at 0.5 ug/ml to detect target protein.