

## Datasheet for ABIN633181 **anti-PLXDC1 antibody (N-Term)**



[Go to Product page](#)

### 1 Image

#### Overview

Quantity:	100 µL
Target:	PLXDC1
Binding Specificity:	N-Term
Reactivity:	Human
Host:	Rabbit
Clonality:	Polyclonal
Conjugate:	This PLXDC1 antibody is un-conjugated
Application:	Western Blotting (WB)

#### Product Details

Immunogen:	PLXDC1 antibody was raised using the N terminal of PLXDC1 corresponding to a region with amino acids MDTLPDNRTRVVEDNHSYYVSRLYGPPSEPHSRELWVDVAEANRSQVKIHT
Specificity:	PLXDC1 antibody was raised against the N terminal of PLXDC1
Purification:	Affinity purified

#### Target Details

Target:	PLXDC1
Alternative Name:	PLXDC1 ( <a href="#">PLXDC1 Products</a> )
Background:	PLXDC1 (TEM7) may play significant role in proliferation and maintenance of neovascular endothelial cells in fibrovascular membranes. TEM7 may be molecular target for new diagnostic and therapeutic strategies for proliferative diabetic retinopathy. The expression level

## Target Details

---

of TEM7 closely parallels histology-based prognostication of osteogenic sarcoma metastasis and, therefore, it is a therapeutic target.

Molecular Weight: 54 kDa (MW of target protein)

## Application Details

---

Application Notes: WB: 1 µg/mL  
Optimal conditions should be determined by the investigator.

Comment: PLXDC1 Blocking Peptide, catalog no. 33R-5878, is also available for use as a blocking control in assays to test for specificity of this PLXDC1 antibody

Restrictions: For Research Use only

## Handling

---

Format: Lyophilized

Reconstitution: Lyophilized powder. Add distilled water for a 1 mg/mL concentration of PLXDC1 antibody in PBS

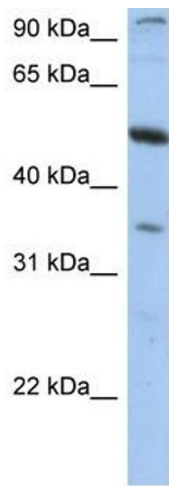
Concentration: Lot specific

Buffer: PBS

Handling Advice: Avoid repeated freeze/thaw cycles.  
Dilute only prior to immediate use.

Storage: 4 °C/-20 °C

Storage Comment: Store at 2-8 °C for short periods. For longer periods of storage, store at -20 °C.



### Western Blotting

**Image 1.** PLXDC1 antibody used at 1 ug/ml to detect target protein.