

Datasheet for ABIN633183 **anti-KHDRBS3 antibody (C-Term)**

2 Images



[Go to Product page](#)

Overview

Quantity:	100 µL
Target:	KHDRBS3
Binding Specificity:	C-Term
Reactivity:	Human
Host:	Rabbit
Clonality:	Polyclonal
Conjugate:	This KHDRBS3 antibody is un-conjugated
Application:	Western Blotting (WB), Immunohistochemistry (IHC)

Product Details

Immunogen:	KHDRBS3 antibody was raised using the C terminal of KHDRBS3 corresponding to a region with amino acids EQSYDSYDNSYSTPAQSGADYYDYGHLSEETYDSYGQEEWTNSRHKAPS
Specificity:	KHDRBS3 antibody was raised against the C terminal of KHDRBS3
Purification:	Affinity purified

Target Details

Target:	KHDRBS3
Alternative Name:	KHDRBS3 (KHDRBS3 Products)
Background:	As a RNA-binding protein, KHDRBS3 plays a role in the regulation of alternative splicing and influences mRNA splice site selection and exon inclusion. KHDRBS3 may play a role as a negative regulator of cell growth. It inhibits cell proliferation and involved in splice site selection

Target Details

of vascular endothelial growth factor. It induces an increased concentration-dependent incorporation of exon in CD44 pre-mRNA by direct binding to purine-rich exonic enhancer. RNA-binding abilities are down-regulated by tyrosine kinase PTK6. It also involved in post-transcriptional regulation of HIV-1 gene expression.

Molecular Weight: 38 kDa (MW of target protein)

Application Details

Application Notes: WB: 0.25 µg/mL, IHC: 4-8 µg/mL
Optimal conditions should be determined by the investigator.

Comment: KHDRBS3 Blocking Peptide, catalog no. 33R-2680, is also available for use as a blocking control in assays to test for specificity of this KHDRBS3 antibody

Restrictions: For Research Use only

Handling

Format: Lyophilized

Reconstitution: Lyophilized powder. Add distilled water for a 1 mg/mL concentration of KHDRBS3 antibody in PBS

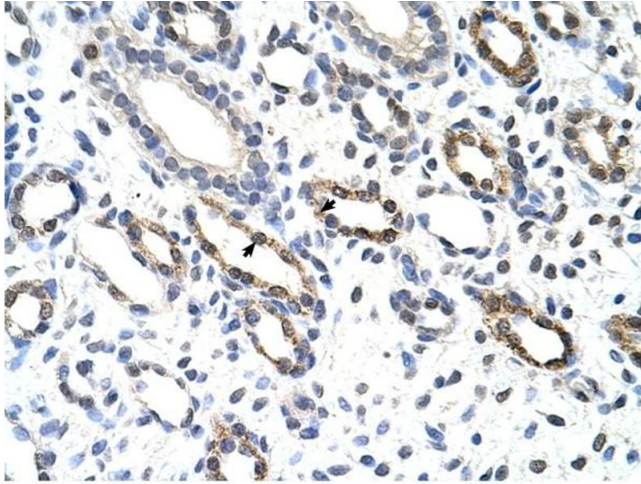
Concentration: Lot specific

Buffer: PBS

Handling Advice: Avoid repeated freeze/thaw cycles.
Dilute only prior to immediate use.

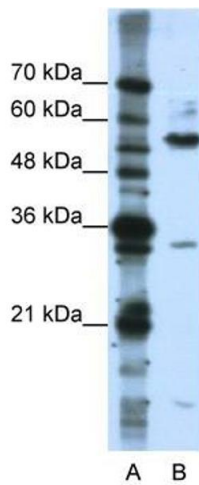
Storage: 4 °C/-20 °C

Storage Comment: Store at 2-8 °C for short periods. For longer periods of storage, store at -20 °C.



Immunohistochemistry

Image 1. KHDRBS3 antibody was used for immunohistochemistry at a concentration of 4-8 ug/ml to stain Epithelial cells of renal tubule (arrows) in Human Kidney. Magnification is at 400X



Western Blotting

Image 2. KHDRBS3 antibody used at 0.25 ug/ml to detect target protein.