

## Datasheet for ABIN633188 **anti-NBEAL1 antibody (N-Term)**



[Go to Product page](#)

### 1 Image

#### Overview

Quantity:	100 µL
Target:	NBEAL1
Binding Specificity:	N-Term
Reactivity:	Human
Host:	Rabbit
Clonality:	Polyclonal
Conjugate:	This NBEAL1 antibody is un-conjugated
Application:	Western Blotting (WB)

#### Product Details

Immunogen:	NBEAL1 antibody was raised using the N terminal of NBEAL1 corresponding to a region with amino acids KDNDKNMSTEDTKKNSDEKTDEEKITSFASANVSSDQWSLEDRHSLDSNT
Specificity:	NBEAL1 antibody was raised against the N terminal of NBEAL1
Purification:	Affinity purified

#### Target Details

Target:	NBEAL1
Alternative Name:	NBEAL1 ( <a href="#">NBEAL1 Products</a> )
Background:	NBEAL1 belongs to the WD repeat neurobeachin family. It contains 1 BEACH domain and 2 WD repeats. NBEAL1 is highly expressed in brain, kidney, prostate and testis and weakly expressed in ovary, small intestine, colon and peripheral blood leukocytes. It may be correlative to several

## Target Details

---

tumors, such as ovary serous adenocarcinoma and metastasis mammary gland carcinoma breast.

Molecular Weight: 153 kDa (MW of target protein)

## Application Details

---

Application Notes: WB: 1 µg/mL  
Optimal conditions should be determined by the investigator.

Comment: NBEAL1 Blocking Peptide, catalog no. 33R-4298, is also available for use as a blocking control in assays to test for specificity of this NBEAL1 antibody

Restrictions: For Research Use only

## Handling

---

Format: Lyophilized

Reconstitution: Lyophilized powder. Add distilled water for a 1 mg/mL concentration of NBEAL1 antibody in PBS

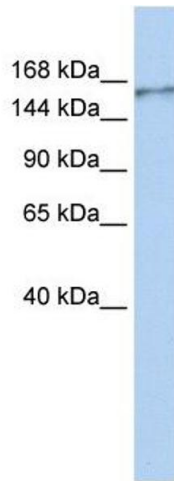
Concentration: Lot specific

Buffer: PBS

Handling Advice: Avoid repeated freeze/thaw cycles.  
Dilute only prior to immediate use.

Storage: 4 °C/-20 °C

Storage Comment: Store at 2-8 °C for short periods. For longer periods of storage, store at -20 °C.



### Western Blotting

**Image 1.** NBEAL1 antibody used at 1 ug/ml to detect target protein.