

Datasheet for ABIN633192 **anti-CPSF4 antibody (C-Term)**



[Go to Product page](#)

1 Image

Overview

Quantity:	100 µL
Target:	CPSF4
Binding Specificity:	C-Term
Reactivity:	Human, Mouse, Rat, Dog
Host:	Rabbit
Clonality:	Polyclonal
Conjugate:	This CPSF4 antibody is un-conjugated
Application:	Western Blotting (WB)

Product Details

Immunogen:	CPSF4 antibody was raised using the C terminal of CPSF4 corresponding to a region with amino acids SLIQLTSQNSSPNQQRTPQVIGVMQSQNSSAGNRGPRPLEQVTCYKCGEK
Specificity:	CPSF4 antibody was raised against the C terminal of CPSF4
Purification:	Affinity purified

Target Details

Target:	CPSF4
Alternative Name:	CPSF4 (CPSF4 Products)
Background:	Inhibition of the nuclear export of poly(A)-containing mRNAs caused by the influenza A virus NS1 protein requires its effector domain. The NS1 effector domain functionally interacts with the cellular 30 kDa subunit of cleavage and polyadenylation specific factor 4, an essential

Target Details

component of the 3' end processing machinery of cellular pre-mRNAs. In influenza virus-infected cells, the NS1 protein is physically associated with cleavage and polyadenylation specific factor 4, 30 kDa subunit. Binding of the NS1 protein to the 30 kDa protein in vitro prevents CPSF binding to the RNA substrate and inhibits 3' end cleavage and polyadenylation of host pre-mRNAs. Thus the NS1 protein selectively inhibits the nuclear export of cellular, and not viral, mRNAs.

Molecular Weight: 24 kDa (MW of target protein)

Application Details

Application Notes: WB: 0.5 µg/mL
Optimal conditions should be determined by the investigator.

Comment: CPSF4 Blocking Peptide, catalog no. 33R-8599, is also available for use as a blocking control in assays to test for specificity of this CPSF4 antibody

Restrictions: For Research Use only

Handling

Format: Lyophilized

Reconstitution: Lyophilized powder. Add distilled water for a 1 mg/mL concentration of CPSF4 antibody in PBS

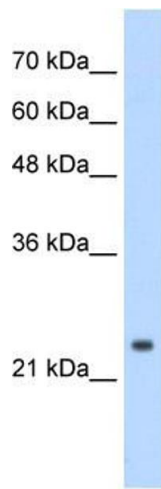
Concentration: Lot specific

Buffer: PBS

Handling Advice: Avoid repeated freeze/thaw cycles.
Dilute only prior to immediate use.

Storage: 4 °C/-20 °C

Storage Comment: Store at 2-8 °C for short periods. For longer periods of storage, store at -20 °C.



Western Blotting

Image 1. CPSF4 antibody used at 0.5 ug/ml to detect target protein.