

## Datasheet for ABIN633203 **anti-RDBP antibody (N-Term)**



[Go to Product page](#)

### 1 Image

#### Overview

Quantity:	100 µL
Target:	RDBP
Binding Specificity:	N-Term
Reactivity:	Human, Mouse
Host:	Rabbit
Clonality:	Polyclonal
Conjugate:	This RDBP antibody is un-conjugated
Application:	Western Blotting (WB)

#### Product Details

Immunogen:	RDBP antibody was raised using the N terminal of RDBP corresponding to a region with amino acids QSSSSTTSQGGVKRSLSEQPVMMDTATATEQAKQLVKSGAISAIAKAETKNS
Specificity:	RDBP antibody was raised against the N terminal of RDBP
Purification:	Affinity purified

#### Target Details

Target:	RDBP
Alternative Name:	<a href="#">RDBP (RDBP Products)</a>
Background:	RDBP is part of a complex termed negative elongation factor (NELF) which represses RNA polymerase II transcript elongation. This protein bears similarity to nuclear RNA-binding proteins, however, it has not been demonstrated that this protein binds RNA. The protein

## Target Details

---

contains a tract of alternating basic and acidic residues, largely arginine (R) and aspartic acid (D). The protein encoded by this gene is part of a complex termed negative elongation factor (NELF) which represses RNA polymerase II transcript elongation.

Molecular Weight: 43 kDa (MW of target protein)

## Application Details

---

Application Notes: WB: 1 µg/mL  
Optimal conditions should be determined by the investigator.

Comment: RDBP Blocking Peptide, catalog no. 33R-7738, is also available for use as a blocking control in assays to test for specificity of this RDBP antibody

Restrictions: For Research Use only

## Handling

---

Format: Lyophilized

Reconstitution: Lyophilized powder. Add distilled water for a 1 mg/mL concentration of RDBP antibody in PBS

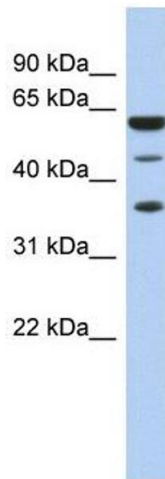
Concentration: Lot specific

Buffer: PBS

Handling Advice: Avoid repeated freeze/thaw cycles.  
Dilute only prior to immediate use.

Storage: 4 °C/-20 °C

Storage Comment: Store at 2-8 °C for short periods. For longer periods of storage, store at -20 °C.



### Western Blotting

**Image 1.** RDBP antibody used at 1 ug/ml to detect target protein.