

Datasheet for ABIN633212 **anti-SLBP antibody**



[Go to Product page](#)

1 Image

Overview

Quantity:	100 µL
Target:	SLBP
Reactivity:	Human, Zebrafish (Danio rerio), Dog
Host:	Rabbit
Clonality:	Polyclonal
Conjugate:	This SLBP antibody is un-conjugated
Application:	Western Blotting (WB)

Product Details

Immunogen:	SLBP antibody was raised using a synthetic peptide corresponding to a region with amino acids INYGKNTIAYDRYIKEVPRHLRQPGIHPKTPNKFKKYSRRSVDQIQIKLWK
Purification:	Affinity purified

Target Details

Target:	SLBP
Alternative Name:	SLBP (SLBP Products)
Background:	SLBP binds to the stem-loop structure in replication-dependent histone mRNAs. Histone mRNAs do not contain introns or polyadenylation signals, and are processed by endonucleolytic cleavage. The stem-loop structure is essential for efficient processing but this structure also controls the transport, translation and stability of histone mRNAs. Expression of the protein is regulated during the cell cycle, increasing more than 10-fold during the latter part

Target Details

of G1.

Molecular Weight: 30 kDa (MW of target protein)

Application Details

Application Notes: WB: 0.25 µg/mL
Optimal conditions should be determined by the investigator.

Comment: SLBP Blocking Peptide, catalog no. 33R-4084, is also available for use as a blocking control in assays to test for specificity of this SLBP antibody

Restrictions: For Research Use only

Handling

Format: Lyophilized

Reconstitution: Lyophilized powder. Add distilled water for a 1 mg/mL concentration of SLBP antibody in PBS

Concentration: Lot specific

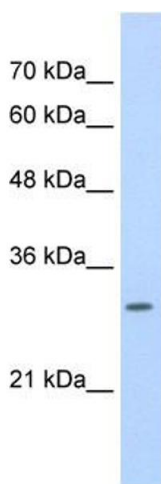
Buffer: PBS

Handling Advice: Avoid repeated freeze/thaw cycles.

Storage: 4 °C/-20 °C

Storage Comment: Store at 2-8 °C for short periods. For longer periods of storage, store at -20 °C.

Images



Western Blotting

Image 1. SLBP antibody used at 0.25 µg/ml to detect target protein.