

Datasheet for ABIN633227 **anti-RBM39 antibody (N-Term)**



[Go to Product page](#)

1 Image

Overview

Quantity:	100 µL
Target:	RBM39
Binding Specificity:	N-Term
Reactivity:	Human, Mouse, Rat
Host:	Rabbit
Clonality:	Polyclonal
Conjugate:	This RBM39 antibody is un-conjugated
Application:	Western Blotting (WB)

Product Details

Immunogen:	RBM39 antibody was raised using the N terminal of RBM39 corresponding to a region with amino acids ADDIDIEAMLEAPYKKDENKLSSANGHEERSKKRKKSKRSRSHERKRSK
Specificity:	RBM39 antibody was raised against the N terminal of RBM39
Purification:	Affinity purified

Target Details

Target:	RBM39
Alternative Name:	RBM39 (RBM39 Products)
Background:	RBM39 is an RNA binding protein and possible splicing factor. It is found in the nucleus, where it colocalizes with core spliceosomal proteins. Studies of a mouse protein with high sequence similarity to this protein suggest that this protein may act as a transcriptional coactivator for

Target Details

JUN/AP-1 and estrogen receptors.

Molecular Weight: 59 kDa (MW of target protein)

Application Details

Application Notes: WB: 1 µg/mL

Optimal conditions should be determined by the investigator.

Comment: RBM39 Blocking Peptide, catalog no. 33R-1083, is also available for use as a blocking control in assays to test for specificity of this RBM39 antibody

Restrictions: For Research Use only

Handling

Format: Lyophilized

Reconstitution: Lyophilized powder. Add distilled water for a 1 mg/mL concentration of RBM39 antibody in PBS

Concentration: Lot specific

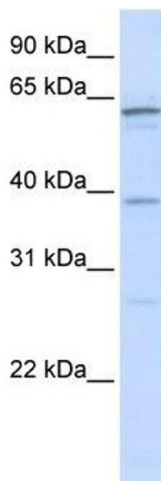
Buffer: PBS

Handling Advice: Avoid repeated freeze/thaw cycles.
Dilute only prior to immediate use.

Storage: 4 °C/-20 °C

Storage Comment: Store at 2-8 °C for short periods. For longer periods of storage, store at -20 °C.

Images



Western Blotting

Image 1. RBM39 antibody used at 1 µg/ml to detect target protein.