

## Datasheet for ABIN633228 **anti-HNRPDL antibody (C-Term)**



[Go to Product page](#)

### 1 Image

#### Overview

Quantity:	100 µL
Target:	HNRPDL
Binding Specificity:	C-Term
Reactivity:	Human, Mouse, Rat
Host:	Rabbit
Clonality:	Polyclonal
Conjugate:	This HNRPDL antibody is un-conjugated
Application:	Western Blotting (WB)

#### Product Details

Immunogen:	HNRPDL antibody was raised using the C terminal of HNRPDL corresponding to a region with amino acids YSGYGGYDYTGYNYGNYGYGQGYADYSGQQSTYKASRGGGNHQNNYQPY
Specificity:	HNRPDL antibody was raised against the C terminal of HNRPDL
Purification:	Affinity purified

#### Target Details

Target:	HNRPDL
Alternative Name:	HNRPDL ( <a href="#">HNRPDL Products</a> )
Background:	HNRPDL belongs to the subfamily of ubiquitously expressed heterogeneous nuclear ribonucleoproteins (hnRNPs). The hnRNPs are RNA binding proteins and they complex with heterogeneous nuclear RNA (hnRNA). These proteins are associated with pre-mRNAs in the

## Target Details

---

nucleus and appear to influence pre-mRNA processing and other aspects of mRNA metabolism and transport. While all of the hnRNPs are present in the nucleus, some seem to shuttle between the nucleus and the cytoplasm.

Molecular Weight: 46 kDa (MW of target protein)

## Application Details

---

Application Notes: WB: 1 µg/mL  
Optimal conditions should be determined by the investigator.

Comment: HNRPD L Blocking Peptide, catalog no. 33R-10241, is also available for use as a blocking control in assays to test for specificity of this HNRPD L antibody

Restrictions: For Research Use only

## Handling

---

Format: Lyophilized

Reconstitution: Lyophilized powder. Add distilled water for a 1 mg/mL concentration of HNRPD L antibody in PBS

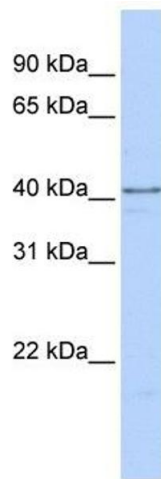
Concentration: Lot specific

Buffer: PBS

Handling Advice: Avoid repeated freeze/thaw cycles.  
Dilute only prior to immediate use.

Storage: 4 °C/-20 °C

Storage Comment: Store at 2-8 °C for short periods. For longer periods of storage, store at -20 °C.



### Western Blotting

**Image 1.** HNRPD L antibody used at 1 ug/ml to detect target protein.