

Datasheet for ABIN633230 **anti-NXF1 antibody (N-Term)**



[Go to Product page](#)

1 Image

Overview

Quantity:	100 µL
Target:	NXF1
Binding Specificity:	N-Term
Reactivity:	Human, Dog
Host:	Rabbit
Clonality:	Polyclonal
Conjugate:	This NXF1 antibody is un-conjugated
Application:	Western Blotting (WB)

Product Details

Immunogen:	NXF1 antibody was raised using the N terminal of NXF1 corresponding to a region with amino acids RPNRRGDTWHDRDRIHVTVRRDRAPPERGGAGTSQDGTSKNWFKITIPYG
Specificity:	NXF1 antibody was raised against the N terminal of NXF1
Purification:	Affinity purified

Target Details

Target:	NXF1
Alternative Name:	NXF1 (NXF1 Products)
Background:	NXF1 is one member of a family of nuclear RNA export factor. Common domain features of this family are a noncanonical RNP-type RNA-binding domain (RBD), 4 leucine-rich repeats (LRRs), a nuclear transport factor 2 (NTF2)-like domain that allows heterodimerization with

Target Details

NTF2-related export protein-1 (NXT1), and a ubiquitin-associated domain that mediates interactions with nucleoporins. The LRRs and NTF2-like domains are required for export activity. NXF1 shuttles between the nucleus and the cytoplasm and binds in vivo to poly(A)+ RNA. NXF1 overcomes the mRNA export block caused by the presence of saturating amounts of CTE (constitutive transport element) RNA of type D retroviruses.

Molecular Weight: 68 kDa (MW of target protein)

Application Details

Application Notes: WB: 0.5 µg/mL
Optimal conditions should be determined by the investigator.

Comment: NXF1 Blocking Peptide, catalog no. 33R-8098, is also available for use as a blocking control in assays to test for specificity of this NXF1 antibody

Restrictions: For Research Use only

Handling

Format: Lyophilized

Reconstitution: Lyophilized powder. Add distilled water for a 1 mg/mL concentration of NXF1 antibody in PBS

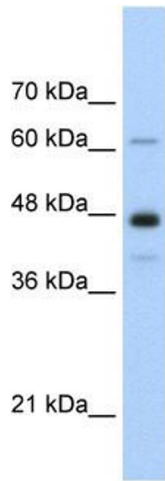
Concentration: Lot specific

Buffer: PBS

Handling Advice: Avoid repeated freeze/thaw cycles.
Dilute only prior to immediate use.

Storage: 4 °C/-20 °C

Storage Comment: Store at 2-8 °C for short periods. For longer periods of storage, store at -20 °C.



Western Blotting

Image 1. NXF1 antibody used at 0.5 ug/ml to detect target protein.