

Datasheet for ABIN633231
anti-RBML2 antibody (Middle Region)



[Go to Product page](#)

1 Image

Overview

Quantity:	100 µL
Target:	RBML2
Binding Specificity:	Middle Region
Reactivity:	Human
Host:	Rabbit
Clonality:	Polyclonal
Conjugate:	This RBML2 antibody is un-conjugated
Application:	Western Blotting (WB)

Product Details

Immunogen:	RBML2 antibody was raised using the middle region of RBML2 corresponding to a region with amino acids SSRDGYSSRDYREPRGFAPSPGEYTHRDYGHSSVRDDCPLRGYSRDRDGYG
Specificity:	RBML2 antibody was raised against the middle region of RBML2
Purification:	Affinity purified

Target Details

Target:	RBML2
Alternative Name:	RBML2 (RBML2 Products)
Background:	The hnRNPs are RNA binding proteins and they complex with heterogeneous nuclear RNA (hnRNA). These proteins are associated with pre-mRNAs in the nucleus and appear to influence pre-mRNA processing and other aspects of mRNA metabolism and transport. While all of the

Target Details

hnRNPs are present in the nucleus, some seem to shuttle between the nucleus and the cytoplasm. The hnRNP proteins have distinct nucleic acid binding properties. RBMXL2 has two RRM domains that bind RNAs. RBMXL2 has similarity to HNRPG and RBMY proteins and it is suggested to replace HNRPG protein function during meiotic prophase or act as a germ cell-specific splicing regulator. It primarily localizes to the nuclei of meiotic spermatocytes. This gene is a candidate for autosomal male infertility.

Molecular Weight: 43 kDa (MW of target protein)

Application Details

Application Notes: WB: 1 µg/mL
Optimal conditions should be determined by the investigator.

Comment: RBMXL2 Blocking Peptide, catalog no. 33R-8844, is also available for use as a blocking control in assays to test for specificity of this RBMXL2 antibody

Restrictions: For Research Use only

Handling

Format: Lyophilized

Reconstitution: Lyophilized powder. Add distilled water for a 1 mg/mL concentration of RBMXL2 antibody in PBS

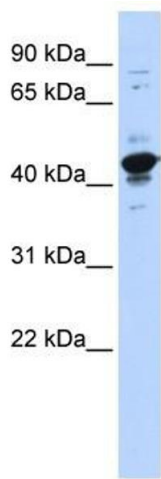
Concentration: Lot specific

Buffer: PBS

Handling Advice: Avoid repeated freeze/thaw cycles.
Dilute only prior to immediate use.

Storage: 4 °C/-20 °C

Storage Comment: Store at 2-8 °C for short periods. For longer periods of storage, store at -20 °C.



Western Blotting

Image 1. RBMXL2 antibody used at 1 ug/ml to detect target protein.