

Datasheet for ABIN633239

anti-SNRPD2 antibody (N-Term)[Go to Product page](#)**1** Image

Overview

Quantity:	100 µL
Target:	SNRPD2
Binding Specificity:	N-Term
Reactivity:	Human, Mouse, Rat
Host:	Rabbit
Clonality:	Polyclonal
Conjugate:	This SNRPD2 antibody is un-conjugated
Application:	Western Blotting (WB)

Product Details

Immunogen:	SNRPD2 antibody was raised using the N terminal of SNRPD2 corresponding to a region with amino acids MSLLNKPKSEMTPEELQKREEEEFNTGPLSVLTQSVKNNTQVLINCRNNK
Specificity:	SNRPD2 antibody was raised against the N terminal of SNRPD2
Purification:	Affinity purified

Target Details

Target:	SNRPD2
Alternative Name:	SNRPD2 (SNRPD2 Products)
Background:	SNRPD2 belongs to the small nuclear ribonucleoprotein core protein family. It is required for pre-mRNA splicing and small nuclear ribonucleoprotein biogenesis. Multiple transcript variants encoding different isoforms have been found for this gene.

Target Details

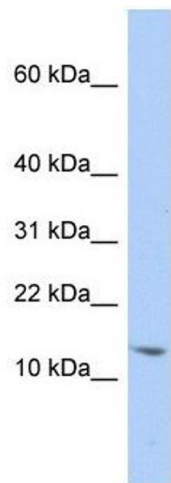
Molecular Weight:	13 kDa (MW of target protein)
Pathways:	Ribonucleoprotein Complex Subunit Organization

Application Details

Application Notes:	WB: 1 µg/mL Optimal conditions should be determined by the investigator.
Comment:	SNRPD2 Blocking Peptide, catalog no. 33R-6463, is also available for use as a blocking control in assays to test for specificity of this SNRPD2 antibody
Restrictions:	For Research Use only

Handling

Format:	Lyophilized
Reconstitution:	Lyophilized powder. Add distilled water for a 1 mg/mL concentration of SNRPD2 antibody in PBS
Concentration:	Lot specific
Buffer:	PBS
Handling Advice:	Avoid repeated freeze/thaw cycles. Dilute only prior to immediate use.
Storage:	4 °C/-20 °C
Storage Comment:	Store at 2-8 °C for short periods. For longer periods of storage, store at -20 °C.



Western Blotting

Image 1. SNRPD2 antibody used at 1 ug/ml to detect target protein.