



## Target Details

---

contains a tract of alternating basic and acidic residues, largely arginine (R) and aspartic acid (D).

Molecular Weight: 43 kDa (MW of target protein)

## Application Details

---

Application Notes: WB: 1 µg/mL  
Optimal conditions should be determined by the investigator.

Comment: RDBP Blocking Peptide, catalog no. 33R-5514, is also available for use as a blocking control in assays to test for specificity of this RDBP antibody

Restrictions: For Research Use only

## Handling

---

Format: Lyophilized

Reconstitution: Lyophilized powder. Add distilled water for a 1 mg/mL concentration of RDBP antibody in PBS

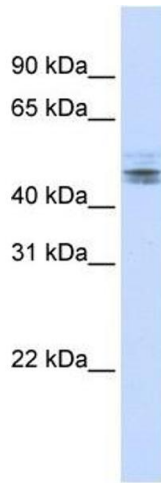
Concentration: Lot specific

Buffer: PBS

Handling Advice: Avoid repeated freeze/thaw cycles.  
Dilute only prior to immediate use.

Storage: 4 °C/-20 °C

Storage Comment: Store at 2-8 °C for short periods. For longer periods of storage, store at -20 °C.



### Western Blotting

**Image 1.** RDBP antibody used at 1 ug/ml to detect target protein.